



# **Township of Ocean**

## **Community Forestry Management Plan**

### **2008-2012**

#### **Township Officials**

Daniel M. Van Pelt, **Mayor**  
Robert Kraft, **Deputy Mayor**  
Richard Reilly, **Committeeman**  
Ken Mosca, **Administrator**  
Diane B. Ambrosio, **Township Clerk**

#### **Environmental Commission/Shade Tree Committee**

Donald J. Lippincott, Jr., **Chairperson**  
Edward M. Covitz, **Vice Chairperson**  
Heide Geary, **Vice Chairperson**  
Beth Laramée, **Secretary**  
Laurie Clune, **Conservation Officer**

Pat McCarty  
Robert Knowles  
Jack Henderson

William Rossnagel  
Thomas Leaming

#### **Prepared By**

ForesTree Consultants  
NJ Approved Forester and Certified Tree Expert #406, Les Alpaugh  
Owner, Andrew Alpaugh  
PO Box 211  
Stockton, NJ 08559-0211  
(609) 397-0615

This plan was prepared in accordance with the New Jersey Shade Tree and Community Forestry Assistance Act, P.L. 1996, Chapter 135.

**April 24, 2008**

# Table of Contents

	<u>Page</u>
<b>I. Municipal Information Form</b>	<b>1</b>
<b>II. Introduction</b>	<b>2</b>
- Mission Statement	
- Goals and Objectives	
- Liability Statement	
<b>III. Community Overview – 5-Years of Progress</b>	<b>7</b>
- Overview	
- 5-Years of Progress	
<b>IV. Community Forestry Program Administration</b>	<b>12</b>
- Organizational Chart	
<b>V. Community Map</b>	<b>13</b>
- Street Map	
- Aerial Photo	
<b>VI. Training Plan</b>	<b>14</b>
- Required Training	
- Elective Training	
<b>VII. Public Education, Awareness, and Outreach</b>	<b>16</b>
- Tree City, USA	
- Arbor Day	
- Project Learning Tree	
- Shade Tree Advisory Committee	
- Public Information Program	
- Big Trees	
- Forest Stewardship on Public Owned Lands	
<b>VIII. Statement of Tree Budget</b>	<b>20</b>
- Budget Summary	
<b>IX. Statement of Plan Implementation</b>	<b>22</b>
- Tree Inventory and Assessment	
- Tree Hazard Identification and Management	
- Tree Maintenance and Care	
- Tree Planting	
- Schedule of Work	
<b>X. Community Stewardship Incentive Program (CSIP)</b>	<b>28</b>
<b>XI. Appendix</b>	<b>32</b>
1. Current Site Plan Requirements	
2. Regulations on Cutting Trees and Shrubs	
3. NJ Cool Cities Approved Planting Lists	
4. Tree City, USA Applications	

# I. MUNICIPAL/COUNTY INFORMATION FORM

Municipality Township of Ocean

County Ocean County

Address 50 Railroad Avenue  
Waretown, NJ 08758

Contact Name and Title Beth Laramee, Environmental Commission Secretary

Phone # (609) 693-3600

Fax # and E-mail (609) 693-0478 E-mail: planning@townshipofocean.org

Organization Name Township of Ocean Shade Tree Advisory Committee

Mayor/County Freeholder's Signature 

Date of Management Plan Submission April 2008

Time Period Covered in Management Plan 2008-2013

I attest that this Management Plan was developed specifically and exclusively for our municipality/county.

- Community Stewardship Incentive Program (CSIP) Practices Identified in Management Plan
- ✓ CSIP #1 Plan Preparation
  - ✓ CSIP #2 Training
  - ✓ CSIP #3 Public Education and Awareness
  - ✓ CSIP #4 Arbor Day Activities
  - ✓ CSIP #5 Assessment/Inventory
  - ✓ CSIP #6 Tree Hazard Identification Plan
  - ✓ CSIP #7 Tree Planting
  - ✓ CSIP #8 Tree Maintenance
  - ✓ CSIP #9 Tree Recycling
  - ✓ CSIP #10 Ordinance Establishment
  - ✓ CSIP #11 Tree Care Disaster Plan
  - ✓ CSIP #12 Insect and Disease Management
  - ✓ CSIP #13 Other

## Official Use Only Certification

The above named municipality/county has made formal application to the New Jersey Forest Service. I am pleased to advise you that after our review, the NJ Forest Service has concluded that this plan meets the standards set forth by the State and the NJ Community Forestry Council and is approved for the period covered.

Signed \_\_\_\_\_

State Forester

Approved Date \_\_\_\_\_

## II. Introduction

This is Ocean Township's 2<sup>nd</sup> Community Forestry Management Plan for the years 2008-2012 (5-years). Significant accomplishments have been achieved following the 1<sup>st</sup> 5-year plan which will be reported on in Section III later in this plan. This plan is prepared in accordance with the "Guidelines for a Second 5-year Community Forestry Management Plan" as required under the New Jersey Shade Tree and Community Forestry Assistance Act, P.L. 1996, Chapter 135. The emphasis for this Township remains the basic elements of tree planting, tree maintenance and the safety of the community forest along streets, parks, municipal complexes and school property. Of special note is the potential for the Township to receive ~\$200,000.00 through the New Jersey No Net Loss Reforestation Act to plant ~665 trees in 2008-09. Planning, administration and implementation of this relatively large tree planting effort will require substantial attention during the next few years.

A meeting between Township representatives and ForesTree Consultants in preparation for writing the 2<sup>nd</sup> 5-year plan focused on past accomplishments, review of the 1<sup>st</sup> plan, collection of supporting data and discussion of ideas and content for future program direction. The remainder of this plan organizes collected information, reports, thoughts and observations into the format required by the Act and outlines goals and objectives for the future. Approval of this plan by the State Forester, upon favorable recommendation from the Community Forestry Council, will provide continued liability protection to the Township under the New Jersey Shade Tree and Community Forestry Act and will render the Township eligible to apply for grants from the New Jersey Forest Service to help implement this plan.

### **Mission Statement:**

***To insure the health, safety, and sustainability of Ocean Township's forest and shade trees for the economic, aesthetic, and environmental benefits provided to Township residents and visitors.***

## Goals and Objectives:

The goals of the 2<sup>nd</sup> 5-year plan remain unchanged from the 1<sup>st</sup> 5-year plan. The objectives of each goal have been evaluated to determine continued validity, amendment, emphasis, exclusion or completion prior to inclusion in this 2<sup>nd</sup> 5-year plan. The following format includes the original goal statement, on-going or incomplete objectives from the 1<sup>st</sup> plan and a list of new and/or added emphasis objectives for the 2<sup>nd</sup> 5-year plan. Information carried from the 1<sup>st</sup> plan is italicized with changes underlined in bold.

### Goal #1:

To increase the administrative capacity, awareness, knowledge, appreciation and support for community trees and forests.

#### Ongoing Objectives from previous plan(2002-2007):

- To **apply for** recognition as a Tree City, USA **annually**. **(Ocean Township was awarded Tree City, USA status during the last plan period.)**
- To support an annual Arbor Day program involving the local school.
- To introduce Project Learning Tree (PLT) curriculum to the local school administration and teachers.
- To **continue** visiting the existing shade tree ordinances and existing site plan requirements for possible amendment.
- To implement forest management on Township lands as an example for local forestland owners.
- To supply pamphlets at the municipal building on new tree care for homeowners including such topics as mulching, watering, pruning, insect and disease identification and backyard composting.

#### New or Added Emphasis Objectives (2008-2012):

- To hold scheduled meetings of the Shade Tree Advisory Committee (STAC).
- To participate in Founder's Day celebrations by distributing Crapemyrtle seedlings – the Township "tree" and to distribute fliers on tree related advice.

- To appoint a "Tree Conservation Officer" to be responsible for proper application of the Township tree code and site plan requirements.

## **Goal #2:**

To continue to plant trees to replace those lost and to increase species diversity and success of new plantings.

### **Ongoing objectives from previous plan (2002-2007):**

- **Note: Most of the previous plan objectives focused upon inventory of planting spots in Waretown and developing planting plans for schools, municipal buildings and municipal parks. These objectives will be included in the No-Net Loss planting plan for 2008-2010.**

### **New or Added Emphasis Objectives (2008-2012):**

- Apply for No-Net Loss tree planting.
- Make arrangements to implement the No-Net Loss grant.
- Complete 'Memorandum of Agreement' regarding duties of contractor, consultant and Township.
- Inform residents of the No-Net Loss tree planting project.
- Participate in No-Net Loss tree planting project as outlined in the 'Memorandum of Agreement'.

## **Goal #3:**

To increase public safety and aesthetics by scheduling maintenance and thorough the reduction of hazardous trees.

### **Ongoing Objectives from previous plan (2002-2007):**

- *To continue the existing hazard tree identification procedure by the local police, parks department, and public works employees.*
- *To conduct an inventory and assessment of trees needing corrective pruning or removal.*

- *To develop a comprehensive hazard tree removal and maintenance plan based on priorities supported by the inventory data.*
- *To assess trees for insect and disease problems.*

**New or Added Emphasis Objectives (2008-2012):**

- Develop a more formal/dedicated inspection procedure to identify trees needing pruning or removal.
- Designate a municipal employee to be trained in hazardous tree identification and assessment.
- Inspect trees in parks once every year and document findings.
- Inspect trees in Waretown and along municipal right-of-ways once every 5-years and following major storms and document findings.
- Continue observations by police, homeowners and municipal employees.

**Goal #4:**

To train and educate elected officials, volunteer members of the new Shade Tree Advisory Committee, and parks department employees in community forestry technical and administrative topics.

**Ongoing Objectives from previous plan (2002-2007):**

- *To attend the New Jersey Shade Tree Federation Meeting on an annual basis.*
- *To meet the CORE training requirements of the NJ Shade Tree and Community Forestry Act and to maintain sufficient continuing education units (8 CEU's per year).*
- *To maintain membership in the New Jersey Shade Tree Federation.*

**New or Added Emphasis Objectives (2008-2012):**

- To focus on training for identifying hazardous tree conditions and remedial actions.
- To provide information to the public regarding care of newly planted No-Net Loss trees such as watering, mulching, stake removal and elevation.
- To hold a public information session regarding No-Net Loss tree planting plan.

## **Liability Statement:**

*Trees in the Township of Ocean are dominant in the landscape and create a pleasing environment for living, work, and play. Although street trees are an asset to the community, it is inevitable that they mature and require care, maintenance and eventually replacement. Care and maintenance, in addition to planting “the right tree in the right place,” can help ensure community trees not only contribute to the environmental and economic vitality of the area, but also reduce the potential hazards to public safety. The Township of Ocean must work within a reasonable budget that may not be able to meet each and every need of the community forest immediately. Therefore, it is the intent of this plan to focus available resources on the greatest need and outline a step by step action plan to achieve a healthy forest with commensurate reduced risks to public safety.*

*The Township of Ocean feels, by taking the logical steps outlined in the plan, it will garner public support for plan implementation and demonstrate long-term benefits to the environment and public safety. The Township also wants to become more pro-active in the management and care of its trees. Through inventory and hazard assessment, the Township will initiate corrective action by the public works department, contracted professionals, the parks department, or the county prior to structural tree failure and other hazardous tree related conditions. It is acknowledged that not all hazardous conditions will be predicted, however, good maintenance and care will reduce the probability of tree failures. The Township also wants to increase homeowner and school children’s awareness, appreciation, and knowledge of trees to enable them to contribute well-informed and meaningful efforts towards the health and sustainability of the Township of Ocean’s trees. **The Township will continue its efforts to have “the right tree planted in the right place” in established and new developments to insure against long-term problems.***

*Following this Community Forestry Management Plan will demonstrate that the Township of Ocean is devoting reasonable levels of resources in a planned manner to reduce the number of tree related accidents, and thereby, reduce its exposure to liabilities and increase public safety.*



### III. Community Overview – 5-Years of Progress

#### A. Overview:

Changes in the overview section from the first 5-year plan are few but significant. The basic historic information remains unchanged and is included below as first written for continuity value. One significant change has been the increase in population from 6,450 to about 7,500, a 14% increase. Without too much ado it is apparent this growth will increase the expectation for services and safe aesthetic environments.

*The Township of Ocean, Ocean County is located in the coastal plain, south-central portion of New Jersey and borders the Barnegat Bay. Lacey Township to the north and Barnegat Township to the south border the Township. It is bisected north-south by the Garden State Parkway and State Route 9 also runs north-south near the bay and passing through the village of Waretown. County Route 532 passes east-west through the northeastern corner of the Township. Waretown is designated as a village center and represents the most densely populated portion of the Township. West of the Garden State Parkway is in the Pinelands Planning area, while the area east of the GSP is in the CAFRA zone. Ocean Township covers 20.8 square miles with the current population of **6,450(2002) 7,502(2008)** persons primarily centered in and around Waretown **and the new US Homes development.***

*Waretown is an old maritime village with a colorful history. At least 5 marinas currently exist with many private dockages. Waretown has had several names since 1762, but most probably got its name in 1939 from an early settler named Abraham Waier who built a mill in the village. During the early war years, Waretown was utilized as a shipping point to New York for lumber and salt from the local salt works. Salt was indispensable in the preservation of meat and fish and also as an ingredient in gun powders. During the mid-1770's, the British*

*guarded the inlet and commerce was conducted at great peril and great fortune when successful. Several mills were located in Ocean Township including one at Wells Mills. Products from the area included lumber, charcoal, sphagnum moss, and other farm products. Waretown was noted for its boat building and was a busy place from 1700-1900 for carpenters, shipbuilders, fitters, ironworkers, blacksmiths, and sailmakers. Stones found around the bay shore are the remnants of ballasts from ships from New York and across the oceans. Cranberries, clamming, and oysters were all part of town's economic history with recreational fishing and boating forming the basis of current economic return to the area.*

*Turning to the forests and trees. From about 1830 until the mid-1930's charcoal was produced from the forests surrounding Waretown. The forests were cut indiscriminately. Eight cord piles were "cooked" for eight days and eight nights. Forestland so cut is still recovering from these past practices. As Waretown grew, the residential areas were carved out of the woodland. Currently most residential homes are situated on heavily wooded parcels. Many of the street borders are lined with native species left untouched and are in little need of improvement. Several developed areas have curbs, sidewalks, and planted trees. Many planted trees have not matured as expected and should be replaced with more vigorous specimens. Overall the health of the Community Forest is good.*

*The Township has several parks including Tuomey Park; the site of the most recent planting supported by a tree planting grant from the New Jersey Forest Service. Other parks include Faust Park, in need of several red maple shade trees; Waretown Lake; and Sands Point Park, currently being planned for improvement and has some noteworthy large trees in need of pruning and special protection during improvement work in the park. Wells Mills Park is County owned and located in Ocean Township.*

*The Township of Ocean has two ordinances dealing with trees. One regulates the indiscriminate and excessive cutting of trees and shrubs and defines the permit process for tree removal. The other deals with the site plan requirements for new construction/development **which was amended in 2006.***

*One of the most immediate challenges in the Township relative to trees is to ensure that the trees and shrubs planted in the new US Homes development meet acceptable standards. Over the course of the next 10 years, US Homes will construct **1400** living units on 400 acres with an additional 300 acres reserved in a natural condition. **As of February 2008 approximately ½ of the homes have been constructed.** This new development will add as many as 2,500 persons to the existing 6,470 residents in the Township. Making sure “the right tree is planted in the right place” will be critical to the long-term utility and safety of the new trees. Additional open space plans include siting and building a golf course in the Township. The Township open space planning includes the continual improvements of existing parks, the County’s Well’s Mills Park, the 300 acres at the US Homes development, and the development of Sands Point Park on the bay.*

The focus of this 2<sup>nd</sup> 5-year Community Forestry Management Plan is to develop the administrative capacity and effectiveness of the Shade Tree Advisory Committee (STAC), complete the No-Net Loss tree planting project, address the tree inventory and assessment and hazard tree identification, and to start planning for the long-term stewardship of the forested portions of municipal open space and recreational areas.

## **B. 5-Years of Progress**

The implementation of the 1<sup>st</sup> 5-year Community Forestry Management Plan (2002-2007) has resulted in some significant accomplishments. Not each and every objective of the 1<sup>st</sup> plan was achieved but many were completed and some are ongoing. Highlighted achievements during the 2002-2007 1<sup>st</sup> plan period include:

1. Effective and efficient administration of the Shade Tree Advisory Committee.
2. Attendance at the N.J. Shade Tree Federation meetings.
3. CORE training requirements were met.
4. Obtaining required 8 CEU's of continuing education units annually.
5. Revision of the tree code.
6. Appointment of a 'Tree Conservation Officer' to administer municipal tree codes.
7. Planting garden and trees in conjunction with the school.
8. Annual Arbor Day celebrations at schools.
9. Completion of assessment of trees in parks resulting in some removals and pruning.
10. Discussions regarding forming a Parks and Recreation Unit to be responsible for tree assessment.
11. Awarded Tree City, USA status.
12. Enacted "new" landscape ordinance in 2006 applicable to all new commercial and residential development.
13. Oversight by Township of planting of ~800 trees in the US Homes development.
14. Continuation of tree planting in parks.

Ocean Township used the original Community Forestry Management Plan as a guide for program development and followed the timeline for the major plan elements. Very few problems or new issues were encountered. One lingering challenge is finding volunteers to participate on the Shade Tree Advisory Committee and means to complete an inventory and assessment of the Township's trees.

The overall benefits to Ocean Township realized by following the 1<sup>st</sup> 5-year Community Forestry Management Plan included:

1. Establishing a strong partnership with the New Jersey Forest Service Community Forestry Program.
2. Participating in training and informational opportunities at the New Jersey Shade Tree Federation meetings.
3. Increased liability protection under the Act.

4. Eligibility to apply for grant funds, especially the recent offer of No-Net Loss funds.
5. Having a pro-active plan to help guide the Township's shade tree program.

The Township has not completed an inventory or assessment of its trees, with the exception of the data collected in the parks. Significant changes include new plantings in the US Homes development and maintenance/removal of some park trees. On-going is the challenge to more precisely assess dangerous tree conditions and to track both needs and actions taken.

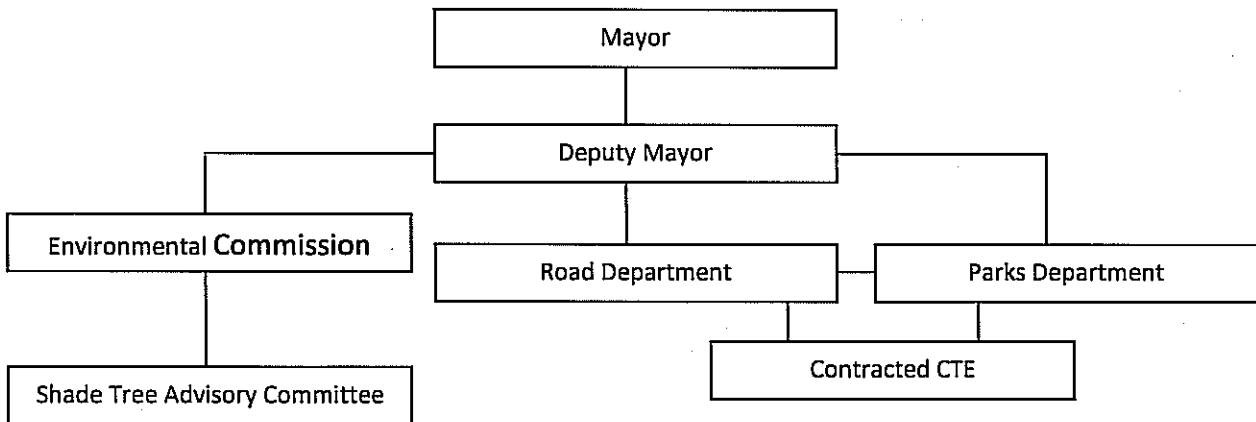
The link between the Community Forestry Management Plan and the Municipal Master Plan has been subtle but recognizable. The most recent Amended Land Use Plan Element, Circulation Plan Element and Master Plan Reexamination Report for the Township of Ocean prepared by T&M Associates, dated November 21, 2005 states, "In addition to the ERI, Ocean has several planning documents that consider natural resources such as the Municipal Master Plan(1999/2001) and the 2002 Community Forestry Plan 2002-2007, as well as its Open Space and Recreation Plan." Linkages between planning elements is facilitated by persons serving on several committees with associated and sometimes over-lapping interests. All of the planning documents hint at the value of trees by addressing environmentally sensitive land, providing adequate open space and creating a hometown atmosphere. However, as with many master plans, the true value of trees and the requisite care needed to sustain the community forest is yet to be realized.

## IV. Community Forestry Program Administration

The governing body of Ocean Township is responsible for overseeing the management of the Township's trees. Significant progress has been made in program administration and effectiveness since the first plan was written as reported in previous sections. Having a Shade Tree Advisory Committee, a new tree ordinance, an appointed 'Tree Conservation Officer' and efforts by both the Public Works and Parks Department all result in improved tree programs.

Currently any resident inquiries or requests regarding trees are channeled through the Township's administrative chain-of-command; eventually assigned to either the Public Works Department or Parks Department for action. The Public Works Department handles downed limbs, leaves and other debris. The Parks Department is responsible for maintenance, fertilizer and pest control involving trees within Ocean Township. A local tree service is contracted for removals and emergency work beyond the capabilities of the Public Works Department. The Ocean County Road Department cares for trees along county roads and is responsive to Township requests. The names of Shade Tree Advisory Committee members are included in the Training Section of this plan.

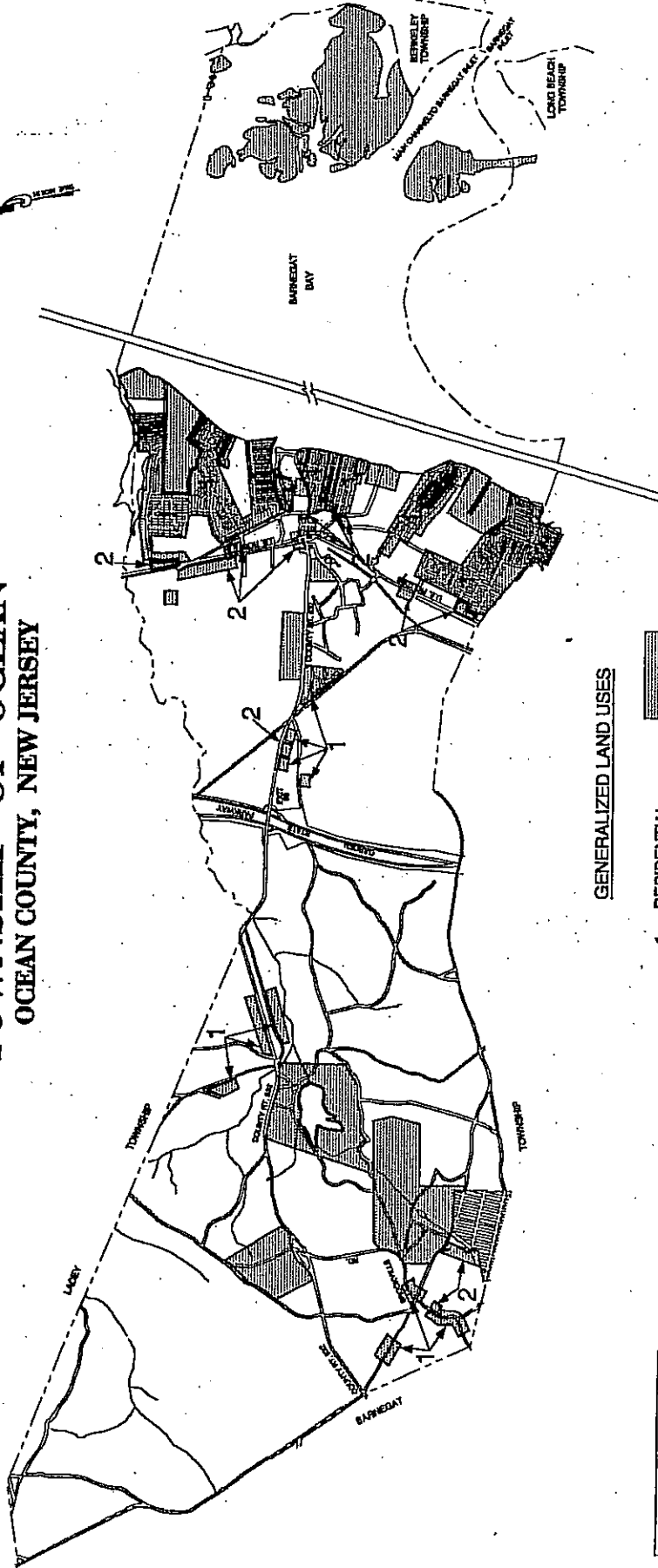
### Organizational Chart



## **V. Community Map**

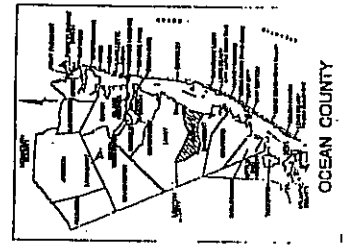
1. Street Map
2. Aerial Photograph

# MASTER PLAN TOWNSHIP OF OCEAN OCEAN COUNTY, NEW JERSEY



## GENERALIZED LAND USES

- |    |                   |  |
|----|-------------------|--|
| 1. | RESIDENTIAL       |  |
| 2. | COMMERCIAL        |  |
| 3. | INDUSTRIAL        |  |
| 4. | MARINE COMMERCIAL |  |
| 5. | CONSERVATION      |  |
| 6. | PARKS/SCHOOLS     |  |
| 7. | VACANT            |  |



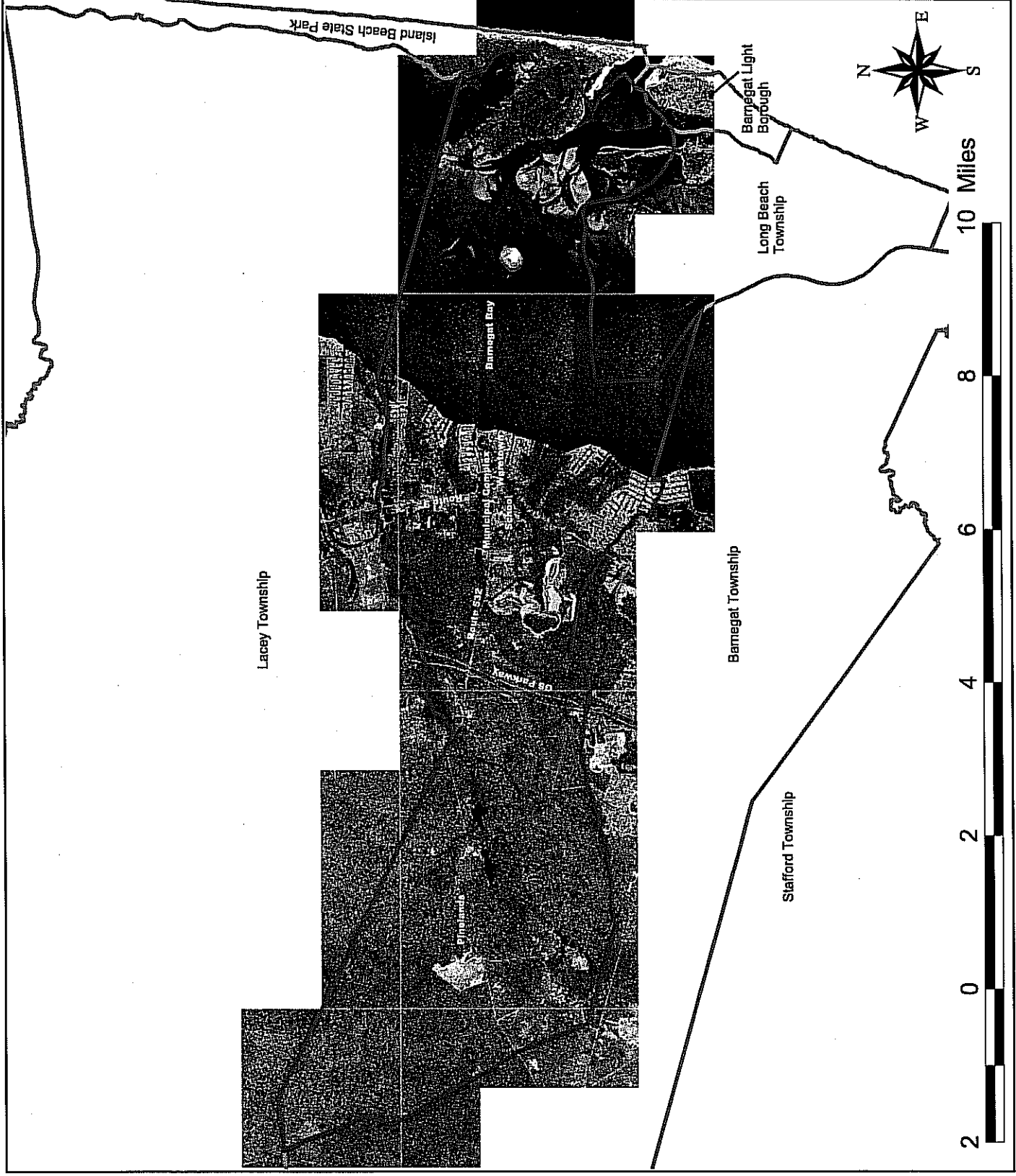
## GENERAL LAND USE



PREPARED BY:  
**REMINGTON VERNICK & VENA**  
 ENGINEERS  
 4 West Street - Freeport, New Jersey 08542 - (732) 464-4200



# Township of Ocean Aerial Overview



## Legend

- Ocean Township
- Ocean County Municipalities

**Municipal Information:**  
 Mayor: Daniel Van Pelt  
 Township of Ocean,  
 Ocean County  
 50 Railroad Ave.  
 Waretown, NJ 08758  
 609-693-3600  
[planning@townshipofocan.org](mailto:planning@townshipofocan.org)

Prepared By: ForesTree Consultants  
 April 25, 2008  
 This map was produced using New Jersey  
 Department of Environmental Protection  
 Geographic Information Systems digital  
 data but this secondary product has not  
 been verified by NJDEP and is not State-  
 authorized.  
 NJ State Plane Feet, 1983

## VI. Training Plan

Some training is required by the State to retain “approved” status for the Township under the Act and other training is needed based upon Township needs and/or individual STAC member interests and assessment of needs. Training is usually limited by available time, interest, funding and/or opportunities. Whatever the cost in time or money, the knowledge gained through training will improve program success.

### Required Training:

CORE training is required by the New Jersey Shade Tree and Community Forestry Act for municipalities seeking approved status under the Act. The purpose of CORE training is to familiarize persons with the background of community forestry and shade tree commission, the legal aspects of managing trees, recognition of hazardous tree conditions and state planning and implementation assistance. To gain and retain approved status a municipality must have at least two persons CORE trained; one volunteer and one municipal employee (ideally someone from public works responsible for trees).

Ocean Township has 2 CORE trained persons:

1. Matthew Ambrosio, Assistant Foreman, Road Department
2. Donald Lippincott, Jr., Volunteer, STAC

It is the intent of the STAC to maintain at least the minimum CORE trained persons. In addition to CORE training, there is a continuing education requirement of 8 Continuing Education Units (CEU's) per year. In 2006, 3 persons obtained a total of 9 CEU's. Any individual can obtain these credits for the municipality and credits are not limited solely to those persons whom are CORE trained. These credits can be most easily obtained by attending the Shade Tree Federation Meeting in October each year.

## **Elective Training:**

Several topics for elective training were mentioned in the first plan. Many of the training elements from the 1<sup>st</sup> plan are still valid. Attendance at the annual meeting of the New Jersey Shade Tree Federation is a tremendous opportunity to keep abreast of known and emerging science and issues regarding shade trees.

During the next 5-year period, Ocean Township will continue on-going work along its roadways and park as well as starting several new projects. Primary in the "new" project category are:

1. The No-Net Loss tree planting effort.
2. Developing and implementing a more formalized approach to identifying, prioritizing and acting on dangerous tree conditions.
3. Developing a tree inventory system compatible with the Township's Geographic Information System work by completing a "tree layer".

Given this focus it is important to designate the Township employees responsible for the tasks and to provide the necessary training. For example, courses are offered in hazard tree identification and classification, tree inventory systems and GIS/GPS software and equipment. Training will be essential for the successful completion of the inventory and should be completed prior to the design of the final inventory and data storage system.

## **VII. Public Education, Awareness and Outreach**

Several of the elements of this section were addressed during the 1<sup>st</sup> 5-year plan period with success. Tree City, USA status was achieved, Arbor Day programs were held at the schools, site plan ordinances were revised and the public information program was started. These initiatives have proven the worth of involving and informing the public regarding the Township's tree programs. The following elements represent on-going and renewed emphasis public education, awareness and outreach topics for the 2<sup>nd</sup> 5-year planning period.

### **Tree City, USA:**

The Township of Ocean has achieved Tree City, USA status and plans to sustain the necessary qualifications to keep the well-earned status. Tree City, USA is a program created by the Arbor Day Foundation in cooperation with the NJ Forest Service to recognize municipalities of all sizes. The Tree City, USA program is a national award given to small towns, townships, counties, and cities in recognition of outstanding stewardship in dealing with the community's tree resource. The rewards for the Township of Ocean for attaining Tree City status are:

- Signs for community entrances.
- A Tree City USA flag.
- A walnut-mounted plaque.
- Recognition of stewardship and the gratitude of future generations.

To achieve Tree City, USA status there are requirements and standards that must be met by the Township. These are:

- A Tree Board or Department.
- A Community Tree Ordinance.
- A Community Forestry Budget with at least \$2 per capita devoted to trees.
- An Arbor Day observation proclamation.

The STAC will be responsible for assessing eligibility, preparing the application, and communication of information for Tree City, USA.

### **Arbor Day:**

Renewed efforts have resulted in annual Arbor Day celebrations in the Township. The Arbor Day celebration and program take place on the Township of Ocean's school grounds. A tree is donated to the school for the purpose of planting. A sixth grade teacher organizes the activities for the day's event. A member of the Township Committee, Shade Tree Advisory Committee and Environmental Commission along with the public and sixth grade class participates in the tree planting and presentation. The mayor reads the Arbor Day Proclamation and the other Committee members assist in planting the tree. The students read poems they have written for the celebration and a large cake with a picture of a tree is enjoyed. The seedlings, which the Township receives from the State nursery, are distributed to the school children with planting and maintenance instructions. A few are kept for the Township to plant throughout the town and in the Township Recreation area where the children can watch them grow. Contact the State Forest Tree Nursery Free Seedlings for School Children Program at (732)-928-0029.

### **Project Learning Tree (PLT):**

The Township of Ocean acknowledges the importance of helping young students learn more about trees and the environment. One program helping to expand and influence young minds is Project Learning Tree. The PLT program is an international environmental education program that is crafted to meet state and national education standards. The Township school is encouraged to take students to the New Jersey Forest Resource Education Center in Jackson, New Jersey to learn about trees and to be introduced to the PLT program. Contact the NJFS Forest Resource Education Center at (732)-728-0029.

## **Shade Tree Advisory Committee (STAC):**

The STAC functions as a sub-committee of the Environmental Commission. While the formation of the sub-committee is a good first step, some thought should be given to separating the two entities and working towards a dedicated Shade Tree Commission.

## **Public Information Program:**

The Township plans to utilize its web site, newsletter and take home messages via school children to convey tree related information to residents. Additional information will be distributed at Founder's Day. Information of primary importance is:

- Information regarding the No-Net Loss tree planting project.
- Species selection for trees planted near the bay, native plant landscaping tips and seashore plants.
- Proper care of newly planted and young trees – watering, mulching, staking, pruning for central stem and elevation.

This work could be supported by a CSIP grant to purchase existing brochures available from the NJ Shade Tree Federation, NJ Forest Service, US Forest Service and/or Rutgers Cooperative Extension.

## **Big Trees:**

One way to raise the awareness of youth about trees is to involve them in some way. The OTSTC will seek out a partnership with the public school to search for and produce a listing of Ocean Township's largest trees. Results of the search will be announced at annual Arbor Day events.

## **Forest Stewardship on Public Owned Lands:**

The Township owns significant acreage of forestlands. Owning land carries stewardship responsibilities which in turn require some planning and informed action over time. Generally, most entities owning land want to know the existing condition and composition of the trees

and wildlife present. Then, acknowledging risks and threats, a vision for the desired future condition is prepared. After these steps are taken, a list of action items designed to achieve the desired future condition is made. These long-range plans, Forest Stewardship Plans, recommend such things as fire protection, wildlife habitat improvement, forest improvement thinning, access creation and improvement and insect and disease management. The wooded properties including the US Homes reserved tract and the woodland adjacent to the Waretown Lake tract are good first candidates for stewardship planning. Implementation of Stewardship Plans not only provides a framework for Township lands but serves as an example for private landowners. Several State programs could be beneficial:

1. Firewise Grants: Contact Greg McLaughlin @ (609)649-3611.
2. CSIP or DEP Environmental Commission Grants: Contact: (609)292-2531.

## **VIII. Statement of Tree Budget**

The Township of Ocean's budget for municipal trees is modest and cannot meet all foreseeable needs. The Mayor and Township committee view the preparation of this plan as a necessary step in assigning priorities, gaining resident support for additional expenditures and in positioning the Township to receive grants from the New Jersey Forest Service. Continued emphasis on tree planting in the new US Homes development will require close scrutiny to guarantee long-term success and the opportunity to utilize No-Net Loss funding will also require oversight, coordination and planning by the Township.

Increasing development, aging community trees, park development, and new awareness has challenged the Mayor and Township committee to make a renewed commitment to increase the safety and aesthetic values of Ocean Township's trees. Great strides have been taken during the past 5-years. These new needs place a strain on municipal budgets that can be augmented through the implementation of this plan and the receipt of grant funds from the New Jersey Forest Service.



**Budget Summary, Community Forestry Program**

Purchase of Trees:		\$ 6,000.00
Labor and Maintenance:		\$21,500.00
- Water Line Parts and Supplies:	\$ 2,350.00	
- Soil Excavation:	\$ 2,500.00	
- Salaries and Wages:	\$12,500.00	
- Tree Removal:	\$ 2,000.00	
- 7 <sup>th</sup> and 8 <sup>th</sup> Street:	\$ 1,800.00	
Fertilizer and Pest Management:		\$ 4,000.00
Consultant Fees:		<u>\$ 3,000.00</u>
- Community Forestry Management Plan:	\$ 3,000.00	
TOTAL:		<u>\$34,500.00</u>

## **IX. Statement of Plan Implementation**

This is the 2<sup>nd</sup> 5-year Community Forestry Management Plan prepared for the Township of Ocean, Ocean County. The first plan marked a new era of concern for the Township's trees. Spurred by a large US Homes Development and newly acquired park lands, Township officials identified the need for the Community Forestry Management Plan. As reported earlier, many positive steps have been taken which have formed the building blocks for the future.

During the 2008-2012 time period the Township will continue its training, outreach, education and awareness activities as described in earlier sections of this plan. Most of the activities remain unchanged with some added emphasis on high priority tasks. Implementation steps associated with public education and outreach require some action each year. Adding additional resident volunteers to the existing Shade Tree Advisory Committee could help spread the workload and enable measurable accomplishment.

The remainder of this section will focus on discussion and implementation of the four required categories regarding:

- Tree Inventory and Assessment
- Tree Hazard Identification and Management
- Tree Planting
- Tree Maintenance and Care

### **Tree Inventory and Assessment:**

The Township of Ocean does not have a tree inventory. Some initial work has been undertaken to assess dangerous tree conditions in the parks and thought is ongoing regarding the formation of a Parks and Recreation Unit to be responsible for tree assessment. The following was included in the 1<sup>st</sup> plan and remains valid:

*Design of a tree assessment and inventory must take into account the apparent needs of the community forest and be undertaken in a prudent manner.*

*A comprehensive inventory of all roadside trees in the Township is neither needed nor practical. The assessment and inventory should focus on the parks, schools, municipal complexes, and built-up sections of Waretown. Detailed inventory will be undertaken in the areas with sidewalks and where trees have been planted. Areas where residential dwellings have been built in forested areas need only visual inspection for hazardous trees and trees in need of maintenance. Most rural roads need only visual inspection for hazardous trees and maintenance needs. A CSIP grant application will be submitted to accomplish this work through the use of a consultant working in concert with the Shade Tree Committee and Superintendent of Parks.*

FTC will advise as necessary to devise an inventory and assessment strategy for Ocean Township if requested.

### **Tree Hazard Identification and Management:**

Tree hazards should be identified through a purposeful and systematic process. Reliance on relatively casual observation by Township employees, police and residents during their every day travels are valuable, but should not be the sole method of identifying tree hazards. During FTC's visit with the Township representatives during February 2008 someone exclaimed, "We need a more formal tree assessment and monitoring program." Forming a Parks and Recreation Unit with subsequent training, to be responsible for tree assessment will be a giant 1<sup>st</sup> step.

### **Tree Maintenance and Care:**

Most of the comments and recommendations in the Tree Maintenance and Care section from the 1<sup>st</sup> plan remain valid today:

*The most apparent need for tree maintenance and care in Ocean Township is on smaller trees planted during the past 15+/- years and several larger specimen trees in the parks. Trees in the heavily wooded residential areas grow under forested conditions and need some dead wood removals. Tree*

*maintenance and care needs will be identified in the tree assessment and inventory phase of this plan. Maintenance and removal priorities will be established and incorporated into the Tree Removal and Maintenance Plan formed from the results of the assessment and inventory.*

Formation and training of the new Tree Assessment Unit within the Parks Department will facilitate data collection for the Tree Removal and Maintenance Plan and implementation of needed tree maintenance and care.

### **Tree Planting:**

Throughout the past 5-year period trees have been planted in the parks, around the schools and as part of Arbor Day celebrations as outlined earlier in this plan. The ~800 trees planted to date in the US Homes development are welcome additions. During the next 5-year period, the biggest tree planting challenge is to utilize the offer of No-Net Loss funding to plant about 665 trees throughout the Township. No-Net Loss money is derived from State entities for compensatory reforestation upon deforestation of a half acre or more of woodland. When reforestation cannot take place on a project site, the NNLR Act allows for the State entity, in lieu of administering off-site planting of trees, to pay monetary compensation into the "Shade Tree and Community Forest Preservation License Plate Fund." The New Jersey Forest Service (NJFS) will offer these funds as NNL grants and administer these grants in compliance with the State's grant policies and NNLR Act requirements for off-site tree planting projects.

An NNL grant provides the municipality, county, or State entity funding to carry out compensatory reforestation required under the NNLR Act on lands under its jurisdiction. A grantee is required to enter into a grant agreement with the Department of Environmental Protection, Division of Parks and Forestry and carry out the reforestation in accordance with the terms of the grant agreement and a planting plan approved as part of the grant application approval process. The number of trees replanted under a grant must be sufficient to achieve the goal of no net loss of forested area.

Immediate next steps for the Township in conjunction with the NNL grant opportunity include completion of this plan and application for the grant. However, in order to apply for the grant a planting plan must be included which shows the location of the trees to be planted and the recommended species. Nearly 700 spots must be identified, located on a map and keyed to species. Ideally, this task should be undertaken by persons with GIS/GPS capability and species/site suitability experience. FTC will follow-up on this task with the Township to develop a memorandum of agreement to complete the NNL tree planting project.

The new tree ordinance contains a list of recommended trees for planting in the Township and designates Crapemyrtle as the "Signature Tree of the Community". Crapemyrtle is sensitive to cold and is near the edge of its natural range. Excellent information is available on various cultivars from Durr's Manual of Woody Landscape Plants, pages 538-545. This reference can help inform decision making regarding selecting the best Crapemyrtle cultivars for planting in Ocean Township.

# **Schedule of Work**

## **Ocean Township Community Forestry Program**

### **2008-2012**

<u>Year</u>	<u>Description of Work</u>
<b>2008</b>	<ul style="list-style-type: none"><li><input type="checkbox"/> Spring. Complete 2<sup>nd</sup> 5-year Community Forestry Plan.</li><li><input type="checkbox"/> Submit grant application for No-Net Loss (NNL) Reforestation Act tree planting project for ~665 trees.</li><li><input type="checkbox"/> Continue formation and training of the special Parks and Recreation Tree Inventory Unit to assess and record tree conditions.</li><li><input type="checkbox"/> Attend to ongoing activities list.</li></ul>
<b>2009</b>	<ul style="list-style-type: none"><li><input type="checkbox"/> Implement NNL tree planting project according to memo of agreement between consultant, contractor and Township.</li><li><input type="checkbox"/> Combine data from tree planting and hazard assessment into one GIS data layer.</li><li><input type="checkbox"/> Attend to on-going activities list.</li></ul>
<b>2010</b>	<ul style="list-style-type: none"><li><input type="checkbox"/> Finish-up NNL tree planting project – final inspections, payments, etc.</li><li><input type="checkbox"/> Submit grant application for tree hazard mitigation – pruning and/or removals using data collected by Township special tree assessment unit and now recorded in database and GIS map.</li><li><input type="checkbox"/> Start over-all stewardship planning for Township owned woodlands.</li><li><input type="checkbox"/> Attend to on-going activities list.</li></ul>
<b>2011</b>	<ul style="list-style-type: none"><li><input type="checkbox"/> Implement tree maintenance grant by contracting to Certified Tree Expert.</li><li><input type="checkbox"/> Apply for next grant to up-to-date Community Forestry Management Plan.</li><li><input type="checkbox"/> Attend to on-going task list.</li></ul>
<b>2012</b>	<ul style="list-style-type: none"><li><input type="checkbox"/> Inspect NNL plantings for survival, vigor, maintenance needs(make sure stakes are removed, mulch, corrective pruning) and replace trees as needed. Must have 95% B&amp;B survival after 2 years.</li><li><input type="checkbox"/> Complete 3<sup>rd</sup> 5-year Community Forestry Management Plan.</li><li><input type="checkbox"/> Attend to on-going activities list.</li></ul>

### **On-going Activities List:**

1. Schedule and hold agenda driven STAC meetings. Take minutes.
2. Maintain membership in N.J. Shade Tree Federation.
3. Submit Tree City, USA application annually in December-January.
4. Maintain 2 CORE trained persons and accumulate 8 continuing education units annually.
5. File annual accomplishment report with State Community Forestry Program at year's end.
6. Systematically assess, record and take action on hazardous tree conditions.
7. Distribute recommended tree planting list.
8. Hold Arbor Day Program with school each year. Arbor Day is 4<sup>th</sup> Friday in April. Remember to prepare the proclamation early in March each year.
9. Attend to training as listed in plan. Especially the New Jersey Shade Tree Federation each fall and selecting some municipal employee to be trained in tree hazard identification and assessment.
10. Apply for grants as they are announced.
11. Follow-up with PLT curriculum and visit to Jackson nursery with school.
12. Continue to re-visit tree ordinances and site plan requirements to suggest changes and improvements based upon changing situations.
13. Post-2010, maintain efforts to complete forest stewardship plans for Township properties.
14. Promote the Township Tree and participate in Founder's Day.

## **X. Community Stewardship Incentive Program (CSIP)**

Upon approval of this plan, meeting the CORE training requirements, and accumulating subsequent continuing education units, the Township of Ocean will be qualified to apply for Community Stewardship Incentive Program (CSIP) grants to assist with the costs of implementing this plan. The following is a list of possible CSIP grant requests for the Township of Ocean. Additional or revised grants may become apparent as plan implementation progresses.

### **CSIP #1, Plan Preparation:**

This plan was prepared using grant funds from this category.

### **CSIP #2, Training:**

Funds are needed to increase the number of individuals trained as described in the training section (**Section VI: Training Plan; Page 14-15**). However, training as described and needed occurs throughout the year on a continuing basis. Support for training via CSIP may be impractical. The recommendation is to use Township funds for training purposes.

### **CSIP #3, Public Education, Awareness, and Outreach:**

Funds are needed to support the initiatives listed in the public education, awareness, and outreach section of this plan. The Township of Ocean is especially interested in purchasing brochures for distribution at the municipal building on homeowner education on tree care. The Township will also be requesting funds in support of their Forest Stewardship Planning initiatives on publicly owned woodlands. (**Section VII: Public Education, Awareness, and Outreach; Page 16-19**).



#### **CSIP #4, Arbor Day Activities**

No funds will be requested in support of Arbor Day activities.

#### **CSIP #5: Assessment and Inventory**

This is a high priority carry-over task from the 1<sup>st</sup> 5-year plan. Ocean Township is in the process of creating and training and “Tree Assessment Unit” within the Parks and Recreation Department. The Township plans to complete assessment and inventory around the parks, schools, municipal complex, and residential areas of Waretown. Funds are needed for to undertake the assessment and inventory, for training, and possibly for computer software and GIS/GPS equipment. Finally funds are needed to create and publish an assessment report and recommendations to support grant requests for CSIP#6; CSIP#7, and CSIP#8. **(Section IX: Statement of Plan Implementation; Pages 22-25)**

#### **CSIP #6: Hazard Tree Identification Plan**

No additional funds will be needed specific to hazard trees. Hazardous trees will be identified by the new tree assessment unit and municipal employees during their daily activities. Hazardous trees will also be identified in the assessment and inventory of the Township under CSIP #5. **(Section IX: Statement of Plan Implementation; Pages 22-25)**

#### **CSIP #7: Tree Planting**

The Township is in the process of preparing a NNL grant to plant ~665 trees throughout the Township over the next 2 years. This project will be a major undertaking and no additional funds through CSIP will be required for tree planting during this plan period. **(Section IX: Statement of Plan Implementation; Pages 24-25)**

### **CSIP #8: Tree Maintenance**

Another top priority need. Trees planted during the past 15+/- years are in need on corrective pruning and maintenance. Some larger specimen trees in the parks are also in need on pruning and dead wood removal. Good results here will raise awareness and garner support for the Township's Community Forestry Program. Funds will be needed every year beginning the year after the inventory and assessment is completed. The optimum future condition is a pruning cycle of 7-10 years for every municipal tree. **(Section IX: Statement of Plan Implementation; Pages 22-23).**

### **CSIP #9; Tree Recycling**

No funds will be requested for Tree Recycling during the 2<sup>nd</sup> 5-year plan.

### **CSIP #10; Ordinance Establishment**

No funds will be requested for Ordinance Establishment during this plan period.

### **CSIP #11; Tree Care Disaster Plan**

Currently, trees are addressed in the Emergency Management Plan for the Township. Standing contracts for emergency work are in place with certified tree experts. No additional funds will be requested for this practice during this 5-year planning period.

### **CSIP #12; Insect and Disease Management**

Municipal trees in the Township of Ocean are relatively free from insects and disease, except for the recent outbreaks of gypsy moth. The Department of Agriculture is treating 36 acres in the spring 2008 with Dimilin. No funds will be requested for this purpose during this plan period.

## **CSIP #13; Other**

Funds will be needed to implement the Forest Stewardship Planning initiative on public lands owned by the Township of Ocean. This initiative is listed under CSIP #3 as well. **(Page 18-19).**

## **XI. Appendix**

1. Current Site Plan Requirements
2. Regulations on Cutting Trees and Shrubs
3. NJ Cool Cities Approved Planting List

**Appendix #1:**  
**Current Site Plan Requirements**

ORDINANCE NO. 2006-21

AN ORDINANCE TO AMEND AN ORDINANCE, ENTITLED  
SECTION 17.20.60 OF THE CODIFIED ORDINANCES OF THE  
TOWNSHIP OF OCEAN, CHAPTER 17 SUBDIVISIONS AS IT  
PERTAINS TO SHADE TREES.

BE IT ORDAINED by the Township Committee of the Township of Ocean, in the County of Ocean and State of New Jersey as follows:

SECTION 1: That Chapter 17.20.60 shall be amended to read as follows:

17.20.60 Shade Trees

- A. In each subdivision of land, the developer shall plant in tree wells along either side of the streets, proper shade or decorative trees at a maximum distance of fifty (50) feet between trees. The minimum distance between such trees planted shall be forty (40) feet. Planting sites shall be indicated on all maps, except maps submitted for final approval.
- B. All trees planted in accordance with the provisions of this chapter shall be placed in a proper manner and in a good grade of topsoil and within the area of the tree well, at point where the tree is planted.
- C. All shade trees to be planted in accordance with this chapter shall be nursery grown, of substantially uniform size and shape and shall have straight trunks, but shall conform in all other respects with the provisions for trees and tree plantings outlined in this chapter.
- D. In areas adjacent to rivers, with freshwater wetlands soils moist soils, the real estate developers shall plant one of the following kinds of trees:

Pick a minimum of two variations of trees listed and one indigenous tree for bio-diversity throughout the property.

- 1. London Plane Thorn less
- 2. Honey Locust (Gleditschia Triacanthos Inermis -- Thornless)
- 3. Willow Oaks
- 4. River Birch
- 5. Sweet Gum
- 6. Black Gum
- 7. Sweet bay Magnolia
- 8. Green Ash
- 9. Red Maple

- E. In the Upland which is away from rivers, bays and lagoons and not adjacent to large bodies of water, the real estate developers shall plant one of the following kinds of trees:

Pick a minimum of two variations of trees listed and one indigenous tree for bio-diversity throughout the property.

1. Crape Myrtle -- "Signature Tree of the Community"

Each Development on the Route 9/Route 532 Corridor and Major and minor subdivision must incorporate a few trees in their site plan for the accent color.

2. Zelkova
3. Scarlet Oak
4. Red Maple
5. Green Ash
6. Bradford Pear/Callery Pear
7. Japanese Cherry
8. Kousa Dogwood
9. Honey Locust
10. Pitch Pine
11. Golden Rain Tree
12. London Plane Tree
13. Scholar Tree
14. Lacebark Elm
15. Red Cedar

- F. In the waterfront property and property in the vicinity of large bodies of water not covered by subsection E of this section, the real estate developers shall plant one of the following kinds of trees

Pick a minimum of two variations of trees listed and one indigenous tree for bio-diversity throughout the property.

1. Callaway Pear
2. Red Cedar
3. London Plane Tree
4. Pitch Pine
5. Golden Rain Tree
6. Scholar Tree
7. Black Gum
8. Japanese Black Pine
9. Poplar -- Populus Alba -- White Poplar/Silver Leaf Poplar
10. Japanese Cherry

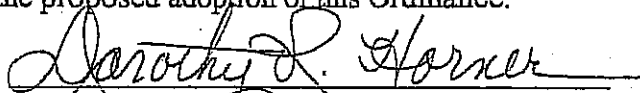
SECTION 2: All ordinances or parts of ordinances inconsistent herewith are hereby repealed.

SECTION 3: If any section, subsection, sentence, clause, phrase or portion of this ordinance is for any reason held invalid or unconstitutional by a court of competent jurisdiction, such portion shall be deemed a separate, distinct and independent provision, and such holding shall not affect the validity of the remaining portions.

SECTION 4: This Ordinance shall take effect after second reading and publication s required by law.

### NOTICE

**NOTICE IS HEREBY GIVEN** that the foregoing Ordinance was introduced and passed by the Township Committee of the Township of Ocean on first reading at a meeting held on the 25th day of May, 2006 Said Ordinance will be considered for second and final reading at a meeting of the Township Committee which is scheduled for the 22<sup>nd</sup> day of June, 2006 at 7:30 p.m., or as soon thereafter as the matter may be reached, at the Municipal Building located at 50 Railroad Avenue, Waretown, New Jersey, at which time the public is invited to ask questions, raise objections, or provide public comment with regard to the proposed adoption of this Ordinance.

  
**DOROTHY R HORNER, RMC**  
**TOWNSHIP CLERK**



①

ORDINANCE 2000-2

ORDINANCE OF THE TOWNSHIP OF OCEAN, COUNTY OF OCEAN, STATE OF NEW JERSEY  
AMENDING CHAPTER 19-12 OF THE CODIFIED ORDINANCES WITH RESPECT TO SITE PLAN  
REQUIREMENTS

BE IT ORDAINED by the Township Committee of the Township of Ocean, County of Ocean and State of New Jersey as follows:

SECTION 1: Chapter 19-12.9 entitled "Requirements for Major Site Plan Applications" shall be amended as follows:

Subsection (a) No changes

Subsection (b) (30) shall be deleted and replaced with the following:

(b) (30) A landscape plan, prepared by a certified landscape architect in accordance with the provisions of Chapter 19-12.10 (c), and the following: The plan shall be prepared on a halftone copy of the Engineer's grading plan, showing existing and proposed grades and shall indicate the location and spacing of shade trees, ornamental trees, evergreen trees, shrubs, ground cover and lawn, utilizing different graphic symbols for each which are representative of the size of the plant, within a period of ten (10) years after installation, and shown to scale. The plan shall include a planting schedule indicating the quantity, common name, botanical name, installed size (including height and caliper for shade and ornamental trees), root and quality for all proposed plantings. The plan shall include a yearly maintenance schedule for all landscape areas. The plan shall indicate the construction materials, location and size of any berms, walls, fences, pavements or site amenities to be provided. The final landscape plan shall be subject to comments and suggestions of the Land Use Board.

SECTION 2: Chapter 19-12.10 entitled "Design and Approval Standards" shall be amended to include a new provision thereof to be designated as Subsection 19-12.10(c) "Landscaping"

1. All applicants shall submit a complete landscaping plan, designed, prepared and duly signed by a certified landscaped architect. The landscaping plan shall specify the location of all planting material, their minimum sizes, quantity and variety in species by botanical and common name. The landscaping plan shall show the location of all existing shade trees of eight (8)

inches caliper or greater, measured three (3) feet above ground level, and of all existing ornamental trees of four (4) inches caliper or greater, measured one (1) foot above ground level and shall show all trees which necessarily shall be removed.

An owner, developer or his agent shall not be permitted to excavate land or remove trees, shrubs or other plantings from a proposed building site or tract of land on which an application is pending before the Township's Land Use Board until a landscaping plan has been reviewed by the Board, except that 10% of the trees and plantings of any tract may be removed to facilitate preliminary engineering associated with an application by the developer to the Ocean Township Land Use Board.

2. All shade trees to be hereafter planted in accordance with this Chapter shall be nursery grown, of substantially uniform size and shape and shall have straight trunks. Ornamental trees need not have straight trunks but must conform in all other aspects with the provisions for trees and tree plantings outlined in this Chapter.

3. All trees planted pursuant to this Chapter shall be planted in a dormant state. The average trunk diameter measured at a height of one (1) foot above the finished grade level shall be a minimum of two (2) inches, depending on good practice with a reference to the particular species to be planted.

4. Subsequent or replacement plants shall conform to the type of existing tree in a given area, provided that if any deviation is anticipated, it must be done only with the permission of the Township's Land Use Board Engineer. In a newly planted area, only one type of tree may be used on any given street, unless otherwise specified by the Land Use Board.

5. In areas adjacent to rivers, bays and lagoons, plantings shall be one of the following kind of trees, the maximum size and characteristics of which follows:

(a) Honey Locust (*Gleditsia triacanthos inermis*): sixty (60) to seventy (70) feet high, fragrant white flowers late in spring, grows well in poor soil, resists salt spray.

(b) Oriental plane (*Platanus orientalis*): seventy (70) to eighty (80) feet tall; rapid growing shade trees; pyramid shaped top.

(c) Willow (*Salix babylonica*): forty (40) to fifty (50) feet high; it's long pedulous branches grow rapidly; especially when close to water.

(d) Canoe birch (*Betula papyrifera*): fifty (50) to sixty (60) feet tall; stately with grey white bark; fast growing.

(e) European white birch (*Betula alba pendula*): forty (40) to fifty (50) feet high; graceful lacy leaves and drooping branches.

(f) Japanese cherry (*Prunus quanzan*): thirty (30) to forty (40) feet high; large double deep pink pendulous flowers clustering among the leaves in May; vase form.

(g) Hawthorne (*Crataegus*): twelve (12) to fifteen (15) feet high; produces a mass of scarlet double flowers in June and colorful red fruit in winter.

6. In the uplands away from rivers, bays and lagoons and not adjacent to large bodies of water, plantings shall be one of the following kinds of trees, maximum size and characteristics of which follows:

(a) Pin oak (*Quercus palustris*): seventy five (75) to ninety (90) feet high; shiny foliage; long lived; turns scarlet in fall; broad pyramid shape.

(b) Norway maple (*Acer platanoides*): Sixty (60) to seventy (70) feet high; leaves turn yellow in fall; globe shaped top.

(c) Honey locust (*Gleditsia triacanthos inermis*): sixty (60) to seventy (70) feet high; fragrant white flowers; grows well in gravel or sandy soil; broad spreading top.

(d) Crabapple (*Malus*): twelve (12) to fifteen (15) feet high; pink or red flowers; broad umbrella top; usually as wide as high a good park tree.

(e) European mountain ash (*Sorbus aucuparia*): twenty five (25) to thirty (30) feet high; great clusters of orange scarlet berries; upright oval shape.

(f) Dogwood (*Cornus florida*, white) and (*Florida Rubra*, pink); twenty five (25) to thirty (30) feet high; pink or white flowers in early spring; red berries and rich red foliage in fall.

(g) European white birch (*Betula alba pendula*): forty (40) to fifty (50) feet high lace like leaves; paper white bark; tall column.

7. In the waterfront property and property in the vicinity of large bodies of water not covered by the above, plantings shall be one of the following kinds of trees, the maximum size and characteristics of which follows:

(a) Bolleana poplar (*Populus boleana*): seventy five (75) to ninety (90) feet tall; grows stately; salt resistant.

(b) Carolina poplar (*Populus eugenei*): seventy five (75) to ninety (90) feet tall; exceedingly rapid growing shade tree; thrives in dry conditions.

(c) Oriental plane (*Platanus orientalis*): seventy five (75) to ninety (90) feet tall; rapid growing shade tree of pyramid habit.

(d) African Tamarix (*Tamarix africana*): Twelve (12) to fifteen (15) feet tall; drooping panicles of attractive pink flowers in spring and feathery gray foliage.

(e) Smoke tree (Rhus Cotinus): twelve (12) to fifteen (15) feet tall; carries great mass of filmy purple flowers in July.

(f) Almey crab: twelve (12) to fifteen (15) feet tall; fiery crimson flowers; very hardy; maroon colored fruit of spreading habit.

(g) Hops crab: twelve (12) to fifteen (15) feet tall; rosy red flowers; red fruit; attractive purple foliage; upright vase shaped growth.

(h) Bechtal crab: twelve (12) to eighteen (18) feet tall; with large double fragrant pink flowers, which resemble small roses in early May; upright growth.

#### 8. Right of Ways and Access Drives.

As a part of said landscaping plan, the applicant and/or developer shall plant, along both sides of said streets, proper shade and/or decorative trees at a maximum distance of 50 feet between trees. The minimum distance between such trees planted shall be 40 feet. Planting sites shall be indicated on the final plot. Such plantings shall not be required within site easements. All trees planted in accordance with the provisions of this Chapter shall be placed in a proper manner and in a good grade of topsoil within the area of the tree well, at the point where the tree is planted.

9. Parking areas. The landscape architectural treatment of all parking areas shall be designed to promote safe and convenient circulation; to limit vehicular/pedestrian conflicts; to limit paved areas; to provide shade and reduce heat island effects; and to soften the overall visual impact of parking areas. The design of all parking areas shall comply with the requirements of Chapter 19-8.6, et seq. "Off-street Parking and Loading areas", with landscape architectural treatment provided as follows:

(a) Shade trees within the parking area shall be provided at a minimum rate of one (1) tree for every five (5) parking spaces. Preservation or relocation of existing trees greater than four (4) inches diameter at breast height (dbh) is encouraged to meet this requirement. Landscape buffer area plantings are not to be considered to satisfy this requirement.

(b) In the islands provided at the end of individual rows of parking spaces between access roads or aisles, planting shall be provided to buffer the view of parked cars, provide shade and cover the ground plane. The use of excessive quantities of unplanted bark or stone mulch shall be avoided.

(c) Landscaping in parking and loading areas shall be staggered and/or spaced so as not to interfere with driver vision and have branches no lower than six (6) feet. All areas between the parking area and the building shall be landscaped.

(d) Plant size shall be a minimum of two (2) to two and one half (2 1/2) inches caliper measured one (1) foot above grade for shade trees and two (2) to two and one half (2 1/2) feet in height for shrubs. The spacing of shrubs provided as a buffer shall be as necessary to provide a continuous hedge or mass with plants touching at the time of installation, and species shall include, but not be limited to: euonymus alatus compactus; myrica pensylvanica; ilex glabra compacta; or any other species approved by the Township Land Use Board Engineer.

(e) Large parking areas shall be subdivided into modules. Separation of modules should be achieved by a landscape island of a minimum width of ten (10) feet. Integration of pedestrian walkways within this island, aligned with building entrances or focal points, is encouraged and should be considered.

(f) Pedestrian/vehicular conflicts shall be minimized through design, yet, when necessary, clearly indicated by a change of vehicular and pedestrian paving and plant materials.

(g) Parking lot lighting should be sited within landscape islands. Trees shall not hinder safe lighting coverage. Tree varieties and light photometrics and locations must be considered. Shade trees should be used to reduce glare to adjacent properties, buildings, and roadways.

10. Green space. Green space is that area located generally between the building improvements, and the parking lot or any required buffering. The landscape plan for all site plan submissions shall address the planting of all green space in accordance with the standards set forth herein. In the site planning process, the provision and landscaping of green space or planting areas should be considered to enhance the visual quantity of a site and provide spatial or directional definition as follows:

(a) Planting areas around small office, commercial, and industrial buildings, (buildings less than 10,000 square feet in area), shall be designed to the building's architecture and use, and provide for both pedestrian and vehicular access. To provide immediate buffering and visual relief, a combination of shade trees, ornamental trees and shrubs shall be provided near the perimeter of the building, and between the building and parking areas. No minimum quantities are specified, however the intent is to provide an aesthetically pleasing facade to proposed buildings. The designer and the Board should consider the dimension of the landscape area along the proposed use of the site to determine the appropriate landscape buffer.

(b) For large office, commercial, and industrial buildings (buildings of ten thousand (10,000) square feet or larger) larger-size trees shall be provided near the building perimeter (within seventy-five (75) feet).

The quantity of trees shall be equal to one (1) tree for every forty (40) feet of general building perimeter.

(c) The tree size shall be based upon the height of the building as follows:

Building Height Stories (Feet)	Tree Size (caliper in inches*)
1 to 2 (<35 feet)	2 to 2 1/2
3 (>35 feet)	2 1/2 to 3

\* measured one (1) foot above grade

(d) These trees shall be located in a manner consistent with architectural and site design and shall provide maximum visual impact. Preserved or relocated existing vegetation may be utilized to meet this requirement.

11. Buffers. Landscape buffers are planting, berms, grading, fences and/or walls provided within the landscape buffer area as designated in Chapter 19-8.4, or as necessary, to visually soften, screen and/or enhance views and minimize and/or separate any adverse impacts or nuisances from adjacent properties or roads. Consideration should be given to the dimensions of a landscape buffer area, existing vegetation, structures, topography, intensity and type of land use to determine the appropriate landscape buffer. The following standards are provided for particular types of buffer areas:

(a) Nuisance landscape buffer. This type of landscape buffer is appropriate in buffer areas provided between commercial or residential uses and adjacent commercial or different residential uses or zones where a continuous visual screen is appropriate. The following standards shall apply:

(1) All existing trees and valuable understory vegetation should be preserved, and the plans must specify appropriate grading and tree protection details to assure the preservation of the vegetation. The plans must clearly indicate all vegetation to be preserved and removed. If the Board deems it appropriate, supplemental planting should be provided to provide a complete visual screen. Quantities and types of supplemental plantings must respond to the deficiencies of existing vegetation and complement the existing vegetation and the overall design and must be indicated in the landscape plan. A minimum of six (6) feet to eight (8) feet for evergreen tree, two (2) feet to two and two and one half (2.5) feet for shrubs and a minimum caliper of two (2) inches to two and one half (2 1/2) inches, measured one (1) foot above grade for shade trees, shall be specified for all supplemental plantings.

(2) Areas void of significant vegetation shall receive landscape architectural treatment including planting, berming, fences or walls as

appropriate. Berms, fences or walls shall be provided at a height of four (4) feet to six (6) feet or as necessary to provide a visual screen. The general design, form and materials of fences, walls and berms should relate to the overall design and the materials utilized for other structures on the site and be aesthetically pleasing from all sides. Planting should be provided in conjunction with berming, fencing or walls or may be provided solely to provide a complete visual screen and be aesthetically pleasing from all sides. The following quantities and minimum size guidelines are provided. If berms, fencing or walls are provided, a decreased quantity of planting may be provided at the discretion of the Board. For every hundred (100) linear feet of buffer area, measured at the longest line, the following must be provided:

Type	Quantity	Size
Evergreen trees	12	6 feet to 8 feet in height
Shade trees	3	2 inches to 2 1/2 inches caliper*
Ornamental trees	As required	6 to 7 feet in height 1 to 1 1/2 inches caliper*
Shrubs	As required	2 to 2 1/2 feet in height

\* measured one (1) foot above grade

(b) Filtered buffer. This type of landscape buffer is appropriate in buffer areas or green space which is provided to soften the impact of a land use yet still allow views beyond the buffer area. In particular, this type of buffer shall be provided around the perimeter of all parking areas, internal site access roads or lanes and the perimeter of a site which abuts a lane, street, road, highway or adjacent site and where a complete visual screen is not appropriate. A buffer shall be provided to screen unsafe distractions such as glare from cars and light standards; to provide a visually pleasing environment; and to provide spatial definition to avoid confusion. The following standards shall apply:

(1) All existing trees and valuable understory vegetation should be preserved, and the plans must specify appropriate grading and tree protection details to assure the preservation of the vegetation. The plans must clearly indicate all vegetation to be preserved and removed. If the Board deems it appropriate, supplement planting should be provided to provide a filtered visual screen. Quantities and types of supplemental plantings must respond to the deficiencies of existing vegetation and complement the existing vegetation and the overall design and must be indicated on the landscape plan. A minimum

height of six (6) to eight (8) feet for evergreen trees, two (2) to two and two and one half (2.5) feet for shrubs, six (6) to seven (7) feet and one (1) to one and one half (1.5) inches caliper, measured one (1) foot above grade, for ornamental trees and a minimum caliper of two (2) to two and one half (2 1/2) inches, measured one (1) foot above grade, for shade trees shall be specified for all supplemental plantings.

(2) Areas void of significant vegetation shall receive landscape architectural treatment, including planting, berming, fences or walls as appropriate. Berms, fences or walls should be provided at a height of two (2) to four (4) feet as necessary to provide an appropriate buffer. The general design, form and materials of fences, walls and berms should relate to the overall design and the materials utilized for other structures on the site and be aesthetically pleasing from all sides. Planting should be provided in conjunction with berming, fencing or walls or may be provided solely to provide an appropriate screen and a visually interesting and pleasing area emphasizing appropriate views. Parked vehicles shall be buffered as viewed from all areas outside of the parking area. The following quantities and minimum size guidelines are provided. If berms, fencing or walls are provided a decreased quantity of planting may be provided at the discretion of the Board. For every one hundred (100) linear feet of buffer area, measured at the longest line, the following must be provided:

Type	Quantity	Size
Evergreen trees	As required	6 to 8 feet in height
Shade trees	4	2 to 2 1/2 inches Caliper*
Ornamental trees	As required	6 to 7 feet in height 1 to 1 1/2 inches caliper*
Shrubs	55	2 to 2 1/2 feet in height * measured one (1) foot above grade

(c) Windbreak/heavy screening. This type of buffer is appropriate in buffer areas where the additional need of a windbreak to stop windborne debris from leaving a site is necessary or around objectionable facilities or utility structures where a dense complete visual screen is appropriate. This would include buffer areas around outdoor storage facilities, loading areas or solid waste disposal facilities (dumpsters) or when an undersized buffer area is provided and the standards specified in Chapter 19-12.10.(c)(5)(a) Nuisance



9

landscape buffer, are not sufficient at the discretion of the Board. The following standards shall apply:

(1) Provide a fence, wall or planting which will create a dense complete visual screen. The height of the fence, wall or planting should be designed relative to the facility being screened and shall be subject to the approval of the Board. The general design, form and materials of fences or walls should relate to the overall design and the materials utilized for other structures on the site or neighborhood and be aesthetically pleasing from all sides. Planting should be included in conjunction with any fence or wall.

(2) If planting alone is provided, then a double staggered row of dense evergreen plants shall be specified. The spacing between individual plants shall be as necessary to provide a continuous hedge with plants touching at the time of installation. The installed and mature height of the plants must respond to the height of the area or facility being screened and the views from adjacent areas and shall be subject to the approval of the Board.

(3) The plan submission should include an illustrative section drawing demonstrating the effectiveness of the buffer.

12. The applicant shall provide an irrigation system to all landscape areas.

13. All disturbed areas not landscaped in accordance with the preceding, shall be seeded or sodded.

14. Alternate forms of landscape treatments, such as decorative stone ground cover, shall be considered by the Board on a case by case basis.

15. Tree holes: A hole in which a tree is to be planted shall be, in each case, 1/3 larger in width and in depth than the existing root-ball of the particular tree to be planted. The hole for a tree to be planted shall contain proper amounts of topsoil and peatmoss but no chemical fertilizer shall be added until the tree has been planted for one year.

16. Applicant shall post a performance guarantee in accordance with Chapter 19-12.12 to guarantee the installation of all landscaping. The amount of the guarantee shall be as estimated by the Township Engineer.

17. In the maintenance bond required by the municipality, provision shall be made to cover the replacement of all landscaping, which may die during the maintenance bond period.

18. Site Maintenance

(a) Site maintenance shall include irrigation of all plantings, removal and replacement of dead trees and shrubs, removal of wind blown trash and leaves, upkeep of all landscape areas, maintenance of fences, walls or berms, weed control and all lawn care. Site maintenance shall also include the removal

and replacement of all trees and shrubs destroyed during storm events. Generally, under site maintenance, the site must be maintained in the same visual and aesthetically pleasing condition as was approved by the Land Use Board under site plan approval.

(b) While the site is under maintenance bond, the applicant shall be responsible for all site maintenance. Thereafter, in perpetuity, site maintenance shall be the responsibility of the property owner.

(c) Trees and shrubs being replaced, at a minimum, shall be replaced at the initial size stipulated in this ordinance.

(d) Failure of the applicant, or any subsequent owner to maintain the landscape plan, as approved by the Township's Land Use Board, shall be considered a violation of the approved site plan.

(e) Any site plan hereinafter approved with a landscape plan, shall include a provision in writing, that failure to maintain the landscaping, as approved in said plan, shall be deemed a violation thereof.

(f) All proposed decreases in site plan approved landscaping, including tree and shrub removal, must be approved by the Land Use Board. This does not include replacement of dead trees and shrubs.

SECTION 3: All ordinances or parts of ordinances inconsistent herewith are hereby repealed.

SECTION 4: If any section, subsection, sentence, clause, phrase or portion of this ordinance is for any reason held invalid or unconstitutional by a court of competent jurisdiction, such portion shall be deemed a separate, distinct and independent provision, and such holding shall not affect the validity of the remaining portion.

SECTION 5: This ordinance shall take effect after second reading and publication as required by law.

NOTICE

NOTICE IS HEREBY GIVEN that the foregoing Ordinance was introduced and passed by the Township Committee of the Township of Ocean on first reading at meeting held on the 13<sup>th</sup> day of January, 2000. The Ordinance will be considered for second and final reading at a meeting of the Township Committee which is scheduled for the 10<sup>th</sup> day of February, 2000, at 8:00 p.m., or as soon thereafter as the matter may be reached, at the Municipal Building located at 50 Railroad Avenue, Waretown, New Jersey, at which time the public is invited to ask questions, raise objections, or provide public comment with regard to the proposed adoption of this Ordinance.

  
DOROTHY R. HORNER, RMC  
TOWNSHIP CLERK

**Appendix #2:**

**Regulations on Cutting Trees and Shrubs**

## CHAPTER XIVA

### TREES AND SHRUBS\*

#### 14A-1 Purpose and Definitions.

14A-1.1 *Purpose.* The purpose of this chapter is to conserve the natural resources and to regulate and control the indiscriminate and excessive cutting of trees and shrubs within the Township of Ocean.

14A-1.2 *Definitions.* As used in this chapter, the following words shall have the following meanings:

a. *Tree.* Any living deciduous tree having a trunk of a diameter greater than five inches, three feet from ground level (deciduous trees regulated under this chapter are all types of maple, oak, birch, gum and willow); any living coniferous tree having a trunk of a diameter greater than five inches, three feet from ground level, or any living dogwood (*Cornus Styraciflora*), or American Holly tree having a diameter of two inches or greater, three feet from ground level.

b. *Shrub.* Native Laurel (*Kalmia Latifolia*) having a root crown of three inches or greater measured at the soil or surface level.

c. *Building Lot.* A parcel of land upon which a dwelling house has been or may be erected in accordance with the zoning ordinance or may be erected with a variance.

d. *Nursery, Garden Center, Orchard or Tree Farm.* Only land within the municipality used for horticultural purposes under controlled agricultural conditions.

e. *Sanitary Land Fill.* Land used by the municipality or private persons for the disposal of rubbish or garbage as defined in the sanitary land fill chapter.

f. *Public Right of Way.* Any street or road shown upon a map or plan filed in the Ocean County clerk's office or on the official map of the Township of Ocean.

g. *Management Plan.* A plan for the management of timbered or forested lands developed by the New Jersey department of environmental protection, or similar state or federal agency, township conservation commission or township officials.

\*The power to regulate the planting and protection of shade trees is contained in R.S. 40:88-4.

14A-2 TOWNSHIP OF OCEAN ORDINANCES

h. *Permits*. A license issued by the conservation commissioner of the Township of Ocean to remove or destroy trees or shrubs as defined in this chapter.

i. *Homestead*. The principal owner-occupied residence having a maximum of three acres upon which the property owner resides and is cutting and harvesting trees on the property solely for his own heating requirements.

j. *Dead Wood*. Dead wood is defined as that wood which has ceased to grow and has died of natural causes.

k. *Harvesting Wood*. The removal, cutting, collecting of any wood other than that defined as dead wood.

14A-2 Permits.

14A-2.1 *Permit Required*. No person, association, group or corporation is to remove or destroy, or cause to be removed or destroyed any tree or shrub growing in the township without having first obtained a permit as provided in this section. Consideration shall be given when size and species indicates historic and landmark value. Coniferous trees may be removed in areas where deciduous trees predominate, only to the extent necessary to provide existing shade trees room for growth.

14A-2.2 *Application for Permit with Building Permit*. Upon application for a building permit for any construction which would cause the removal or destruction in whole or part of any tree or shrub as defined in this chapter, the application shall be accompanied by a plot plan which shall indicate the location of all trees and shrubs on the lot or lots for which such permit is sought. The plot plan shall designate which trees, if any, are to be removed or destroyed. Copies of such plot plan shall be filed by the applicant with the building inspector, the conservation commissioner, engineer and environmental commission, if such commission is in existence at the time of application. The building inspector, township engineer and environmental commission shall review same and notify the conservation commissioner of their recommendations. Such recommendations shall not be binding upon the conservation commissioner. The recommendations shall be forwarded to the conservation commissioner within 15 days of the receipt of the application by the building inspector, township engineer and the environmental commission, failing in which the township conservation commissioner may grant or deny a permit without further delay. Upon such approval, the building inspector shall issue a building permit as required by law.

14A-2.3 *Application for Permit Without Building Permit.*  
Applications for a permit for the removal or destruction of trees or shrubs as defined in this chapter, where a building permit is not immediately

involved, shall be made directly to the conservation commissioner and shall contain the name of the applicant, location of the property and plot plan as aforesaid, and in addition thereto the purposes for which the application is being made. The following shall be considered legitimate purposes for the removal of a tree or shrub as defined:

Harvesting timber, fire protection, industrial use, private parks, scenic improvement, hardship or danger to adjacent properties, removal of diseased or damaged trees, transplanting or removal in a growing condition to other locations, installation of utilities or drainage of surface water.

The foregoing to be carried out in accordance with an approved forest management plan, taking into consideration that certain trees will be left for scenic beauty.

A copy of the plot plan shall be filed with the environmental commission if the commission is in existence at the time of the filing of the application, which shall act upon the application within 15 days of the date of receipt, and if the commission has not acted upon the application within this period, the conservation commissioner may grant or deny a permit without further delay.

14A-2.4 *Standards.* Prior to the issuance of a permit by the conservation commissioner the lands covered by each application shall be viewed by the conservation commissioner or his representative who shall inspect the land as to the trees and shrubs which are the subject of the application, as well as drainage and other physical conditions existing on the property and adjacent property, and the conservation commissioner or his representative shall issue the permit upon a finding:

- a. That the destruction or removal to be permitted would not impair the growth and development of the remaining trees and shrubs on the property of the applicant or adjacent properties.
- b. Would not cause soil erosion.
- c. Would not impair existing drainage patterns.
- d. Would not lessen property values in the neighborhood.
- e. Would not substantially impair the aesthetic values of the area.

The conservation commissioner shall have the authority to affix reasonable conditions to the granting of a permit in conformity with the purposes set forth herein.



14A-3 TOWNSHIP OF OCEAN ORDINANCES

**14A-3 Conservation Commissioner.**

There is hereby established the office of conservation commissioner, whose duties shall be as herein indicated. The term of office of conservation commissioner shall be for a period of one year but, in no event shall his term extend more than 14 days beyond December 31 of any calendar year.

**14A-4 Protection of Trees.**

No soil material, permanent or temporary, shall be placed within three feet of any trees or shrubs. Where grading may be required, trees shall be walled in an extension tile to the outer crown of the tree.

**14A-5 Exempt Lands or Activities.**

The following lands or activities shall be exempt from the provisions of this chapter: nurseries, garden centers, orchards and tree farms, gardening, sanitary land fill operations licensed by the township and State of New Jersey, surface mining operations, public rights of way, engineers and surveyors engaged in professional activities, and building lots of less than one-half acre where an existing home has been fully constructed.

**14A-6 Fees.**

Upon the filing of an application to the conservation commissioner, the applicant shall pay ten dollars (\$10.00) to the Township of Ocean for an application fee, unless the property to be harvested qualifies as a homestead, in which case the application must be submitted but the application fee and all other fees herein will be waived. In addition, if the conservation commissioner shall issue a permit for the destruction and/or removal of trees pursuant to the terms of this chapter, an additional permit fee of ten dollars (\$10.00) shall be required. Thereafter, the following fee schedule shall be in effect:

a. Twenty five dollars (\$25.00) per acre of area harvested. For the purposes of computing such fee, fractions of one acre shall constitute one acre, if the total acreage exceeds one acre. If the total acreage is less than one acre, no additional fee, other than the ten dollar (\$10.00) application fee and ten dollar (\$10.00) permit fee, shall be required.

b. In the alternative of the permit fee and a fee to be imposed in accordance with the acreage to be harvested, the applicant can submit a management plan prepared by the New Jersey Department of Environmental Protection, Division of Forestry, or a similar State or Federal agency, or a management plan prepared by a person holding a Bachelor of Science Degree in Forestry from a recognized institution of higher education, in which event the permit fee of ten dollars (\$10.00) and the acreage fee, twenty five dollars (\$25.00) per acre, or for part of an acre, will be waived by the conservation commissioner.

c. In addition, no permit fee or harvesting fee, other than the ten dollar (\$10.00) application fee, need be paid for harvesting dead wood if and upon the condition that written permission from the owner of the subject premises be given to the conservation commissioner and a copy of such written permission be in the possession of the wood harvester at all times that such person is harvesting the dead wood from the subject premises.

d. Harvesting wood shall require both an application fee and a permit fee, as required in paragraphs a. or b. above.

#### **14A-7 Appeals.**

Whenever any application for a permit shall be denied by the conservation commissioner, the applicant may appeal the denial to the township committee by filing a written notice of appeal with the township clerk within ten days after receiving a written notice of denial of the application. The township committee shall hold a public meeting on the matter in accordance with rules or procedures to be established by the township committee and may modify or affirm or reverse the decision of the conservation commissioner.

#### **14A-8 Permit Applications.**

All permits to be issued by the conservation commissioner pursuant to this chapter, upon condition that the application is in proper form and in accordance with the standards referred to in section 14A-2, shall be in the form of an original and three copies of the permit, the original of which shall be given to the property owner; one copy to be given to the building department of the Township of Ocean; and one copy to be kept in the files of the conservation commissioner.

All applications for permits shall be made by the property owner, or his legal representative. The application shall be valid for one year from the date of issuance.

Any person cutting or harvesting wood pursuant to this chapter, shall have on his person a copy of the permit issued by the conservation commissioner.

Any and all permits issued by the conservation commissioner shall expire, on their own terms, and pursuant to this chapter, 90 days after the issuance thereof. All existing permits outstanding as of the date of the enactment of this chapter shall expire 90 days after publication of this ordinance as required by law.

#### **14A-9 Complaints, Violations and Penalties.**

Whenever a violation of the provisions of the chapter occurs, or is alleged to have occurred, any person may file a written complaint, including the conservation commissioners, with the police department. Such complaint stating fully in the causes and basis thereof shall be filed with the police department, with a copy to be filed with the conservation commissioner and served on the alleged violator by the Ocean Township Police Department. The police department shall properly record this complaint, and ascertain whether a valid permit is in effect. In the case of a violation of the ordinance the police department shall immediately take action upon the complaint. Such action shall include, the investigation, the issuance of a summons and the prosecution thereof.

Any person or persons who shall violate any of the provisions of this chapter shall upon conviction thereof be subject to a fine not less than \$100.00 and not more than \$1,000.00; or imprisonment in the county jail for a term not exceeding 90 days; or be required to perform community service for a period not exceeding 90 days.

**Appendix #3:**

**NJ Cool Cities Approved Planting List**

Common Name:	Scientific Name:	Size & Planting Types:
Trident Maple	<i>Acer buergerianum</i>	Small, FTH, HALB
Hedge Maple	<i>Acer campestre</i>	Small, FP, HALB
Amur Maple	<i>Acer ginnala</i>	Small, FP, HALB
Sycamore Maple	<i>Acer pseudoplatanus</i>	Large, SPT, HALB
Armstrong Red Maple	<i>Acer rubrum</i> 'Armstrong'	Large, HALB
Red Maple 'October glory'	<i>Acer rubrum</i> 'October glory'	Large, FP, HALB
Red Sunset Maple	<i>Acer rubrum</i> 'red sunset' or 'franksred'	Large, HALB
Bonfire Sugar Maple	<i>Acer saccharum</i> 'bonfire'	Large, HALB
Green Mountain Sugar Maple	<i>Acer saccharum</i> 'green mountain'	Large, FP, HALB
Tatarian Maple	<i>Acer tataricum</i>	Small, HALB
Purpleblow Maple	<i>Acer truncatum</i>	Small, SPT, FP, HALB
Armstrong Freeman Maple	<i>Acer x fremunii</i> 'Armstrong'	Large, HALB
Ruby Red Horsechestnut	<i>Aesculus x carnea</i> 'Briotii'	Med., HALB
Serviceberry	<i>Amelanchier arborea</i>	Small, SPT
Downy Serviceberry	<i>Amelanchier canadensis</i>	Small, FP
Allegheny Serviceberry	<i>Amelanchier laevis</i>	Small, FP
Amelanchier Serviceberry	<i>Amelanchier laevis</i> 'cumulus'	Small
Cumulus Serviceberry	<i>Amelanchier x grandiflora</i> 'cumulus'	Small, FP
American Hornbeam	<i>Carpinus caroliniana</i> 'palisade'	Small, FTH
Magnifica Hackberry	<i>Celtis laevigata x occidentalis</i> 'Magnifica'	Large, HALB
Katsura Tree	<i>Cercidiphyllum japonicum</i>	Large, FTH
Redbud	<i>Cercis</i> spp.	Small
Redbud off SPT list	<i>Cercis canadensis</i>	Small, SPT
Kousa Dogwood	<i>Cornus kousa</i> 'milkyway'	Small
Cornelian Cherry (single stem)	<i>Cornus mas</i>	Small
Turkish Filbert	<i>Corylus colurna</i>	Med., FP
Hawthorn	<i>Crataegus x lavalleyi</i>	Small, FTH
Autumn Purple Ash	<i>Fraxinus americana</i> 'Autumn Purple'	Large, FP, HALB
Rosehill Ash	<i>Fraxinus americana</i> 'Rosehill'	Large, FP, HALB
Green Ash	<i>Fraxinus pennsylvanica</i>	Large, HALB
Newport Green Ash	<i>Fraxinus pennsylvanica</i> 'Newport'	Large, FP, HALB
Patmore Green Ash	<i>Fraxinus pennsylvanica</i> 'Patmore'	Large, FP, HALB
Ginko Biloba	<i>Ginkgo biloba</i> (Male)	Large, SPT

FTH = Fall Transplant Hazard

FP = Fall Planting Tree

SPT = Seashore Planting Tree

HALB = ALB Host tree

Common Name:	Scientific Name:	Size & Planting Types:
Ginkgo biloba 'magyar'	<i>Ginkgo biloba</i> 'magyar'	Large, FP
Princeton Sentry Ginkgo	<i>Ginkgo biloba</i> 'Princeton Sentry'	Large, SPT
Honeylocust	<i>Gleditsia triacanthos</i> 'inermis'	Large, FP
Dwarf Honeylocust	<i>Gleditsia triacanthos</i>	Small, SPT
Kentucky Coffeetree	<i>Gymnocladus dioica</i>	Large
Golden Rain Tree	<i>Koelreuteria paniculata</i>	Med., FTH
Rotundiloba Sweetgum (seedless)	<i>Liquidambar styraciflua</i> 'rotundiloba'	Large, FTH
Amur Maackia	<i>Maackia amurensis</i>	Small
Amur Maackia 'starburst'	<i>Maackia amurensis</i> 'starburst'	Small, FP
American Hop Hornbeam	<i>Ostrya virginiana</i>	Small, SPT
Amur Corktree	<i>Phelladendron amurense</i>	Med.
Amur Corktree 'shademaster'	<i>Phelladendron amurense</i> 'shademaster'	Small, FP
London Plane Tree	<i>Platanus x acerifolia</i>	Large, SPT, FP, HALB
Newport Purple-leaf Plum	<i>Prunus cerasifera</i> var.	Small, FTH
Sargent Cherry	<i>Prunus sargentii</i>	Med., FTH
Oriental Cherry	<i>Prunus serrulata</i> 'amanogawa'	Small, FTH
Kwanzan Cherry	<i>Prunus serrulata</i> 'kwanzan'	Med., FTH
Yoshino Cherry	<i>Prunus x yedoensis</i>	Med., FTH
Callery Pear	<i>Pyrus calleryana</i>	Small, FTH
Sawtooth Oak	<i>Quercus acutissima</i>	Large, FTH
Swamp White Oak	<i>Quercus bicolor</i>	Large, FTH
Scarlet Oak	<i>Quercus coccinea</i>	Large, FTH
Pin Oak	<i>Quercus palustris</i>	Large, FP
Green Pillar Oak	<i>Quercus palustris</i> 'green pillar'	Large, FP
Willow Oak	<i>Quercus phellos</i>	Large, FTH
English Oak	<i>Quercus robur</i>	Large, FTH
Northern Red Oak	<i>Quercus rubra</i>	Large, SPT, FTH
Japanese Pagoda Tree	<i>Sophora japonica</i>	Med, SPT
Regent Scholartree	<i>Sophora japonica</i> 'regent'	Large, FP
Japanese Tree Lilac	<i>Syringa reticulata</i> 'ivory silk'	Small
American Linden Redmond	<i>Tilia Americana</i> 'redmond'	Large, FP
Littleleaf Linden	<i>Tilia cordata</i>	Large, SPT
Littleleaf Linden	<i>Tilia cordata</i> 'greenspire'	Large, FP

FTH = Fall Transplant Hazard

FP = Fall Planting Tree

SPT = Seashore Planting Tree

HALB = ALB Host tree

**Appendix #4:**

**Tree City, USA Applications**

# TREE CITY USA Application for Recertification

Mail completed application with requested attachments to your state forester no later than December 31.  
The TREE CITY USA award is in recognition of work completed by the community during the calendar year.  
Please provide information for the year ending.

(Some states require information in addition to the requested on this application. Check with your state foresters.)

As Mayor of the community of Twp. of Ocean  
(Title: Mayor or other city official)

I herewith make application for this community to be officially recertified as a Tree City USA for 2007, having achieved the standards set forth by The National Arbor Day Foundation as noted below. (year)

### Standard 1: A Tree Board or Department

List board members, and meeting dates for the past year; or name of city department and manager.

(See attached)

### Standard 2: A Community Tree Ordinance

Check One:  Our ordinance as last submitted is unchanged and still in effect.  
 Our ordinance has been changed. The new version is attached.

### Standard 3: A Community Forestry Program with an Annual Budget of at Least \$2 Per Capita

Total community forestry expenditures ..... \$ 14,200  
Community populations ..... 7,200

Attach annual work plan outlining the work carried out during the past year. Attach breakdown of community forestry expenditures.

### Standard 4: An Arbor Day Observance and Proclamation

Date observance was held April 28, 2006  
Attach program of activities and/or news coverage. Attach Arbor Day proclamation.

Signature

Mayor

Title

3-19-07

Date

Please type or print the following:

Mayor or equivalent:

Name: Daniel M. Van Pelt  
Title: Mayor  
Address: 50 Railroad Ave  
City, State, Zip: Waretown, NJ 08758  
Phone #: (609) 693-3302 x223  
Email: otmayor@comcast.net

City Forestry Contact:

Name: Diane B. Ambrosio  
Title: Admin. Asst.  
Address: 50 Railroad Ave  
City, State, Zip: Waretown, NJ 08758  
Phone #: (609) 693-3302 x233  
Email: otmayor@comcast.net

NOTE: Application will not be processed without Standard 3 and 4 attachments.

## Certification

(To Be Completed By The State Forester)

(Community)

The above named community has made formal application to this office. I am pleased to advise you that we reviewed the application and have concluded that, based on the information contained herein, said community is eligible to be recertified as a Tree City USA, for the \_\_\_\_\_ calendar year, having in my opinion met the four standards of achievement in urban forestry.

Signed \_\_\_\_\_

State Forester:

Date

Person in State Forester's Office who should receive recognition material:

Name: \_\_\_\_\_  
Title: \_\_\_\_\_  
Agency: \_\_\_\_\_

UPS Address: \_\_\_\_\_  
City, State, Zip: \_\_\_\_\_  
PH #: \_\_\_\_\_ Email: \_\_\_\_\_



## TREE CITY USA RE-CERTIFICATION APPLICATION

The following is a list of Environmental Commission members:

- Donald Lippincott, Jr. – Chairman
- Heide Geary - Vice Chairman
- Thomas Learning
- Robert Knowles
- Edward Covitz
- Patricia McCarty
- William Rosnagel .

### Additional Shade Tree Members

- James Mitchell – Road Department
- Matthew Ambrosio - Volunteer

The Environmental Commission and the Shade Tree Commission work together on recommendations regarding tree planning, maintenance and landscaping plans. They also are responsible for reviewing any applications for development in the municipality – paying particular attention to the species or trees selected for the project and ensuring that the proper maintenance plan is included in the application.

The landscape ordinance was adopted in 2006 and is being used for all new projects both commercial and residential in the Township.

The Township of Ocean in conjunction with the Ocean County Shade Tree Commission has planted 10 Bradford Pears trees at the Frederick Priff Elementary School for Arbor Day 2006 and an additional Crape Myrtle tree for the ceremony (the Township's Signature Tree). To date, the trees have responded extremely well to their new environment, but continued maintenance and a care is an integral part of the project and will ensure long term viability for our project.

The Township did purchase and plant Norway Spruce, Skyline Locust, and Crape Myrtle trees and have planted them at various parks throughout the Township. The trees add additional beauty to the area as long as providing a healthy environment. The Committee is now in the process of receiving requests from citizens and civic organizations for additional tree planting sites.

The Township continues maintain and removed trees and brush to maintain the town owned right of ways. The program currently maintains 1,500 feet of road frontage by pruning and removing diseased trees.

### Annual Budget - Breakdown

The following is a breakdown of the per capita budget allotted to the Community Forestry Program. The following consists of the maintenance and labor items handled by the Ocean Township Parks Department. The Parks Department is responsible for the maintenance, fertilizer and pest control involving the trees within Ocean Township.

The Parks Department recommended installing water lines to ensure that plantings had an adequate supply of water.

#### Cost Breakdown

1. Purchasing of Trees		\$6,000.00
• White Pine		
• List other species		
• Crepe Myrtle		
• Skyline Locust		
• Bradford Pear		
• Arbor Day Tree		
2. Labor and Maintenance		\$21,150.00
• Water Line Parts & Supplies	\$2,350.00	
• Soil Excavation	\$2,500.00	
• Salaries & Wages	\$12,500.00	
• Diseased Tree Removal	\$2,000.00	
• 7 <sup>th</sup> & 8 <sup>th</sup> Street	\$1,800.00	
3. Fertilizer & Pest Maintenance		<u>\$4,000.00</u>
<b>Total Community Forestry Exp.</b>		<b>\$31,150.00</b>

# TUBE-SEEDLING ORDER FORM

Tree City USA

## Celebrate Arbor Day 2004

New Jersey Forest Service  
Community Forestry Program  
PO Box 404  
Trenton, New Jersey 08625

### Office Use Only

Order No. \_\_\_\_\_  
Date of Order   /  /    
Ack.   /  /    
Paid \_\_\_\_\_  
Check # \$ \_\_\_\_\_

**ORDER BY: April 5, 2004**

**MAIL TO ABOVE ADDRESS ONLY**

**\*\*No tax on tree orders accepted - order early supplies are limited \*\*\***

**~~No confirmation of order will be given. We are unable to bill for new material.~~**

Please Type or Print Clearly

Municipality (where trees will be planted): Township of Ocean  
Organization: Township of Ocean - Environmental Commission  
Contact Name: Diane B. Ambrosio  
Title: Secretary - Environmental Commission  
Address (No PO Box): 50 Railroad Avenue.  
City, State, Zip: Waretown, NJ 08758  
Phone: (609) 693-3302 ext 233  
Fax: (609) 693-9026


Please type or print clearly in the appropriate boxes. Incomplete forms will not be processed.

DATE OF CELEBRATION	Shipping and Pick Up availability will be	QUANTITY (CIRCLE ONE)	Shipping (CIRCLE ONE)	(FOR OFFICE USE ONLY) DATE SENT
April 30, 2004	done within one week of your celebration	98 <u>196</u>	*UPS <u>PICK UP</u>	

### HOW WILL YOUR TUBE-SEEDLINGS BE USED?

They will be distributed to the school children who participate in Arbor Day to plant at home and several will be kept to be planted in some of the Township Parks.

Trees are to be used by groups and organizations for Arbor Day and Environmental Projects Only

QUANTITY	DESCRIPTION OF TREES	AMOUNT
	Norway Spruce / White Pine/ Douglas Fir/ Red Oak <i>Species selection based on availability</i>	No Cost
	*Shipping and Handling (see below)	\$

#### \*Shipping and Handling

\$10 for 98 tube-seedlings

\$15 for 196 tube-seedlings

\*If you would like your tube-seedlings shipped send this form to the above address, along with a check or purchase order payable to:  
State of New Jersey, Forest Service

#### Directions for Pickup Orders

From the Turnpike, exit 7A. Take 195E

From the Parkway, exit 98. Take 195W

On 195, take exit 21 (527S) Go about 5 miles.

The Forest Resource Education Center/Tree Nursery is on Rte 527/528 on right side.

If you have any questions concerning this form, call (609) 292-2532

**ARBOR DAY PROGRAM**  
**TOWNSHIP OF OCEAN**  
**APRIL 30, 2004**

The Arbor Day celebration and program take place on the Township of Ocean's school grounds. A tree is donated to the school for the purpose of planting. Ms. Matorina, sixth grade teacher, organizes the activities for the day's event.

A member of the Township Committee, Shade Tree Commission, and Environmental Commission along with the public and sixth grade class participates in the tree planting and presentation.

The Mayor reads the Arbor Day Proclamation and the other Commission members assist in planting the tree. The students read poems they have written for the celebration and a large cake with a picture of a tree for all to enjoy.

The seedlings, which the Township receives, are distributed to the school children with planting and maintenance directions. A few are kept for the Township to plant throughout the town in and in the Township Recreation area where the children can watch them grow.

INC 3.9w  
2/22/05

# TREE CITY USA Application for Recertification

Mail completed application with requested attachments to your state forester no later than December 31.  
The TREE CITY USA award is in recognition of work completed by the community during the calendar year.  
Please provide information for the year ending \_\_\_\_\_  
(Some states require information in addition to the requested on this application. Check with your state foresters.)

As Daniel Van Pelt of the community of Township of Ocean  
(Title - Mayor or other city official)

I herewith make application for this community to be officially recertified as a Tree City USA for 2004, having achieved the standards set forth by The National Arbor Day Foundation as noted below. (year)

### Standard 1: A Tree Board or Department

List board members, and meeting dates for the past year; or name of city department and manager.

Established a Shade Tree Commission. It is a sub committee of the Environmental Commission. The Environmental Commission the First Monday of each month. Special meetings as necessary.

### Standard 2: A Community Tree Ordinance

Check One:  Our ordinance as last submitted is unchanged and still in effect.  
 Our ordinance has been changed. The new version is attached.

### Standard 3: A Community Forestry Program with an Annual Budget of at Least \$2 Per Capita

Total community forestry expenditures ..... \$ 13,400.00

Community populations ..... 6,700

Attach annual work plan outlining the work carried out during the past year. Attach breakdown of community forestry expenditures.

### Standard 4: An Arbor Day Observance and Proclamation

Date observance was held 4/20/04

Attach program of activities and/or news coverage. Attach Arbor Day proclamation.

Signature

MAYOR

Title

2/1/2005

Date

Please type or print the following:

#### Mayor or equivalent:

Name: Daniel M. Van Pelt  
Title: Mayor  
Address: 50 Railroad Avenue  
City, State, Zip: Waretown, NJ 08758  
Phone #: (609) 693-3302  
Email: OIMayor@Comcast.net

#### City Forestry Contact:

Name: Robert J. Kraft  
Title: Committeeman  
Address: 50 Railroad Avenue  
City, State, Zip: Waretown, NJ 08758  
Phone #: (609) 693-3302  
Email: OIMayor@Comcast.net

NOTE: Application will not be processed without Standard 3 and 4 attachments.

## Certification

(To Be Completed By The State Forester)

(Community)

The above named community has made formal application to this office. I am pleased to advise you that we reviewed the application and have concluded that, based on the information contained herein, said community is eligible to be recertified as a Tree City USA, for the \_\_\_\_\_ calendar year, having in my opinion met the four standards of achievement in urban forestry.

Signed \_\_\_\_\_ State Forester Date \_\_\_\_\_

#### Person in State Forester's Office who should receive recognition material:

Name: \_\_\_\_\_ UPS Address: \_\_\_\_\_  
Title: \_\_\_\_\_ City, State, Zip: \_\_\_\_\_  
Agency: \_\_\_\_\_ PH #: \_\_\_\_\_ Email: \_\_\_\_\_

- ✓ Periodic site inspections of the US HOMES project where over 800 trees were planted. Species include - Thunder Cloud Plum, Aristocrat Pear, Skyline Locust, Zelcova and Red Sunset Maple. All trees have been planted according to Township specifications and code.
- ✓ Maintaining appropriate tree care i.e. mulching. Watering and pruning of existing and newly planted trees through out the municipality
- ✓ The Ocean Township Environmental Commission and Shade Tree Commission have recommended the Crepe Myrtle as the official Township tree.
- ✓ Planted 10 Bradford Pear trees at the Frederick Priff Elementary School for Arbor Day 2003.
- ✓ Maintained 1500 feet of road frontage by pruning and removing diseased trees.

The Shade tree Commission has recommended extending the timeline for conducting and completing the tree assessment and inventory section of the Management Plan. Although the work has started, the committee recommended incorporating Geographical Information System software into this task. The township recently completed mapping the entire municipality and would like to create a "Tree Overlay Layer" that can be used to track tree maintenance, replacement, new plantings and removal.

#### Community Stewardship Incentive Program:

The State's Community Stewardship Incentive Program has not received funding for FY02 & FY03.

The Township has looked for other sources of grant funding and has applications pending with private and non-profit agencies for Community Forestry activities.

*This is last year's ac.*

# Community Forestry Management Plan

## ANNUAL ACCOMPLISHMENT REPORT FORM

Municipality Township of Ocean

County Ocean County

Address 50 Railroad Avenue


Waretown, New Jersey 08758

Contact Name and Title Daniel Van Pelt, Mayor

Phone # (609) 693-3302, Ext. 223

Fax # and E-mail (609) 693-9026 / e-mail: otmayor@comcast.net

Organization Name Township of Ocean

Mayor/County Freeholder's Signature 

Date of Management Plan Approval January 15, 2002

Time Period Covered in Management Plan 1 Year

Date of Annual Accomplishment Report Submission August 12, 2003

Accomplishment Report for Calendar Year 2003

**\*PLEASE INCLUDE THIS FORM AS THE COVER PAGE TO YOUR ANNUAL ACCOMPLISHMENT REPORT**

*Submit Report To:*  
**Community Forestry Program  
501 East State Street  
PO Box 404  
Trenton, NJ 08625  
Attn: Pam Tappen**

# **Township Of Ocean**

## **Community Forestry Management Plan**

### **Annual Accomplishment Report**



**2003**



- ✓ Periodic site inspections of the US HOMES project where over 800 trees were planted. Species include - Thunder Cloud Plum, Aristocrat Pear, Skyline Locust, Zelcova and Red Sunset Maple. All trees have been planted according to Township specifications and code.
- ✓ Maintaining appropriate tree care i.e. mulching. Watering and pruning of existing and newly planted trees through out the municipality
- ✓ The Ocean Township Environmental Commission and Shade Tree Commission have recommended the Crepe Myrtle as the official Township tree.
- ✓ Planted 10 Bradford Pear trees at the Frederick Priff Elementary School for Arbor Day 2003.
- ✓ Maintained 1500 feet of road frontage by pruning and removing diseased trees.

The Shade tree Commission has recommended extending the timeline for conducting and completing the tree assessment and inventory section of the Management Plan. Although the work has started, the committee recommended incorporating Geographical Information System software into this task. The township recently completed mapping the entire municipality and would like to create a "Tree Overlay Layer" that can be used to track tree maintenance, replacement, new plantings and removal.

#### Community Stewardship Incentive Program:

The State's Community Stewardship Incentive Program has not received funding for FY02 & FY03.

The Township has looked for other sources of grant funding and has applications pending with private and non-profit agencies for Community Forestry activities.

### Annual Budget - Breakdown

The following is a breakdown of the per capita budget allotted to the Community Forestry Program. The following consists of the maintenance and labor items handled by the Ocean Township Road Department. The Road Department is responsible for the maintenance, fertilizer and pest control involving the trees within Ocean Township.

#### Cost Breakdown

1. Purchasing of Trees		\$5,800.00
• List other species		
• Crepe Myrtle		
• Norway Spruce		
• Skyline Locust		
• Bradford Pear		
• Arbor Day Tree		
2. Labor and Maintenance		\$16,400.00
• Soil Excavation	\$2,000.00	
• Salaries & Wages	\$10,500.00	
• Diseased Tree Removal	\$2,000.00	
• Township Streets	\$1,900.00	
3. Fertilizer & Pest Maintenance		<u>\$3,000.00</u>
<b>Total Community Forestry Exp.</b>		<b>\$25,200.00</b>

# TREE CITY USA Application

Mail completed application with requested attachments to your state forester no later than December 31.  
The TREE CITY USA award is made in recognition of work completed by the city during the calendar year.  
Please provide information for the year ending.

(Some states require information in addition to that requested on this application. Check with your state forester.)

As Robert J. Kraft of the city of Township of Ocean,  
(Title — Mayor or other city official)

I herewith make application for this community to be officially recognized and designated as a Tree City USA for 2002, having  
achieved the standards set forth by The National Arbor Day Foundation as noted below. (year)

**Standard 1: A Tree Board or Department**

List date of establishment of board, board members, and meeting dates for the past year; or name of city department and manager.

Establishing a Shade Tree Commission, it will be a sub-committee of the Environmental Commission. The Environmental Commission meets the 2nd Tuesday of every month.

**Standard 2: A Community Tree Ordinance**

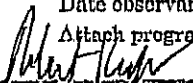
Date ordinance established 1972 Ordinance 1972-16 and 2000 Ordinance 2000-2  
Attach ordinance.

**Standard 3: A Community Forestry Program with an Annual Budget of at Least \$2 Per Capita**

Total community forestry expenditures ..... \$ 27,286.00  
Community population ..... 6,450  
Attach annual work plan outlining the work carried out during the past year. Attach breakdown of community forestry expenditures.

**Standard 4: An Arbor Day Observance and Proclamation**

Date observance was held 4/27/2001  
Attach program of activities and/or news coverage. Attach Arbor Day proclamation.

 Mayor 1/28/2002  
Signature Title Date

Please type or print the following:

**Mayor or equivalent**

Name: Robert J. Kraft

Title: Mayor

Address: 50 Railroad Avenue

City, State, Zip: Waretown, NJ 08758

Phone #: 609-693-3302

**City Forestry Contact**

Name: Michael Villanova

Title: Superintendent of Parks

Address: 50 Railroad Avenue

City, State, Zip: Waretown, NJ 08758

Phone #: 609-693-3302

NOTE: Application will not be processed without Attachments.

## Certification

(To Be Completed By The State Forester)

(Community)

The above named community has made formal application to this office. I am pleased to advise you that we reviewed the application and have concluded that, based on the information contained herein, said community is eligible to be recognized and designated as a Tree City USA, for the \_\_\_\_\_ calendar year, having in my opinion met the four standards of achievement in urban forestry.

Signed \_\_\_\_\_ State Forester \_\_\_\_\_ Date

**Person in State Forester's Office who should receive recognition material:**

Name: \_\_\_\_\_ Address: \_\_\_\_\_

Title: \_\_\_\_\_ City, State, Zip: \_\_\_\_\_

Agency: \_\_\_\_\_ Phone #: \_\_\_\_\_

# PROCLAMATION

**WHEREAS**, in 1949 the legislature set aside the last Friday of April as Arbor Day to promote the planting of trees and to encourage the protection of our forests from fires and pests that destroy the beauty and usefulness of our woodlands; and

**WHEREAS**, half of New Jersey's total land area is forested or tree covered; and

**WHEREAS**, trees play an important role in the ecosystem in which we live, and the trees reduce the erosion of our precious topsoil caused by wind and water, clean the air we breath and the water we drink, produce oxygen, provide habitat for birds and wild-life and reduce heating and cooling costs by moderating temperature; and

**WHEREAS**, trees are a renewable resource giving us paper for fine literature, wood for homes, fuel for fires, and countless other wood products; and

**WHEREAS**, trees provide increased property value, enhanced economic viability and pleasing aesthetic qualities along streets and properties in municipalities; and

**WHEREAS**, tree planting in yards and farms, in school yards and parks, and along streets and highways creates an enduring heritage for generations that follow; and


**WHEREAS**, it is the Fifty-third Anniversary of the State Arbor Day Celebration in New Jersey;

**NOW, THEREFORE, BE IT RESOLVED**, by the Mayor and Township Committee of the Township of Ocean, in the County of Ocean, and State of New Jersey, that we do hereby proclaim Friday, April 26, 2002 as

## ARBOR DAY

And urge all citizens to support efforts to protect our trees and woodlands and further urge all citizens to plant trees to gladden hearts and promote the well being of present and future generations.

Dated this 24<sup>th</sup> day of January, 2002:

  
**ROBERT J. KRAFT, MAYOR**  
**TOWNSHIP OF OCEAN**

## TREE CITY USA RE-CERTIFICATION APPLICATION

The following is a list of Environmental Commission members:

- Donald Lippincott, Jr. – Chairman
- Heide Geary - Vice Chairman
- Thomas Leaming
- Robert Knowles
- Edward Covitz
- Patricia McCarty
- William Rossnagel

### Additional Shade Tree Members

- James Mitchell – Road Department
- Matthew Ambrosio - Volunteer

The Environmental Commission and the Shade Tree Commission work together on recommendations regarding tree planning, maintenance and landscaping plans. They also are responsible for reviewing any applications for development in the municipality – paying particular attention to the species or tress selected for the project and ensuring that the proper maintenance plan is included in the application.

The landscape ordinance was adopted in 2006 and is being used for all new projects both commercial and residential in the Township.

The Township of Ocean in conjunction with the Ocean County Shade Tree Commission has planted 10 Bradford Pears trees at the Frederick Priff Elementary School for Arbor Day 2006 and an additional Crape Myrtle tree for the ceremony (the Township's Signature Tree). To date, the trees have responded extremely well to their new environment, but continued maintenance and a care is an integral part of the project and will ensure long term viability for our project.

The Township did purchase and plant Norway Spruce, Skyline Locus, and Crape Myrtle trees and have planted them at various parks throughout the Township. The trees add additional beauty to the area as long a providing a healthy environment. The Committee is now in the process of receiving requests from citizens and civic organizations for additional tree planting sites

The Township continues maintain and removed trees and brush to maintain the town owned right of ways. The program currently maintains 1,500 feet of road frontage by pruning and removing diseased trees.

## TREE CITY USA RE-CERTIFICATION APPLICATION

The following is a list of Environmental Commission members:

- Donald Lippincott, Jr. – Chairman
- William Rossnagel - Vice Chairman
- Dennis Berberich
- Robert Knowles
- Patricia McCarty
- Heide Geary
- Edward Covitz.

The Environmental Commission and the Shade Tree Commission work together on recommendations regarding tree planning, maintenance and landscaping plans. They also are responsible for reviewing any applications for development in the municipality – paying particular attention to the species or trees selected for the project and ensuring that the proper maintenance plan is included in the application.

Both Commissions have forwarded a Resolution to the Ocean Township Committee recommending that the Township of Ocean have a signature tree for Routes 9 and 532 – the communities' main corridors. After a series of public hearings on the subject, the Crepe Myrtle has been chosen to be the signature tree.

The Township of Ocean in conjunction with the Ocean County Shade Tree Commission has planted 10 Bradford Pear trees at the Frederick Priff Elementary School for Arbor Day 2003. With the assistance of the Ocean Township Municipal Utilities Authority, the Environmental Commission was able to have 2 separate water lines installed to where the trees were located. This would ensure the ability to provide sufficient water for the proper care and maintenance of our trees. To date, the trees have responded extremely well to their new environment, but continued maintenance and care is an integral part of the project and will ensure long term viability for our project. We anticipate planting additional Bradford Pears, as well as Skyline Locust, in 2004. The Committee is now in the process of receiving requests from citizens and civic organizations for additional tree planting sites.

The Township has also implemented an aggressive tree maintenance and removal for township owned right of ways. The program currently maintains 1,500 feet of road frontage by pruning and removing diseased trees.

**TREE CITY USA**  
**RE-CERTIFICATION APPLICATION**  
**ANNUAL WORK PLAN**  
**TOWNSHIP OF OCEAN, OCEAN COUNTY**

The following is a list of Shade Tree Committee members:

- Donald Lippincott, Jr. – Chairman
- Robert Kraft
- Jeffrey Geary
- Mike Villanova

Meet on the same evening of the Environmental Commission, the Monday before the first Thursday, every other month.

Members of the Shade Tree Commission have attended courses and received CEU's.

The Environmental Commission and the Shade Tree Commission work together on recommendations regarding tree planning, maintenance and landscaping plans. They also are responsible for reviewing any applications for development in the municipality – paying particular attention to the species or trees selected for the project and ensuring that the proper maintenance plan is included in the application.

Both Commissions have forwarded a Resolution to the Ocean Township Committee recommending that the Township of Ocean have a signature tree for Routes 9 and 532 – the communities' main corridors. After a series of public hearings on the subject, the Crepe Myrtle has been chosen to be the signature tree.

The Commissions are working with the school to have a contest involving the students with coming up with a slogan for the Signature Tree. Each Student will be asked to draw their version of a Crepe Myrtle Tree. The winners will receive a Crepe Myrtle Tree of their own and a gift certificate to a bookstore.

The overall winner will have their picture placed on a small garbage bag to be distributed with other information on backyard composting, watering, mulching, tree planting and maintenance. These will be distributed at the Founder's Day festivities held in the Township every August.

The Township has also implemented an aggressive tree maintenance and removal for township owned right of ways. The program currently maintains 1,500 feet of road frontage by pruning and removing diseased trees. Plant trees to replace those lost.