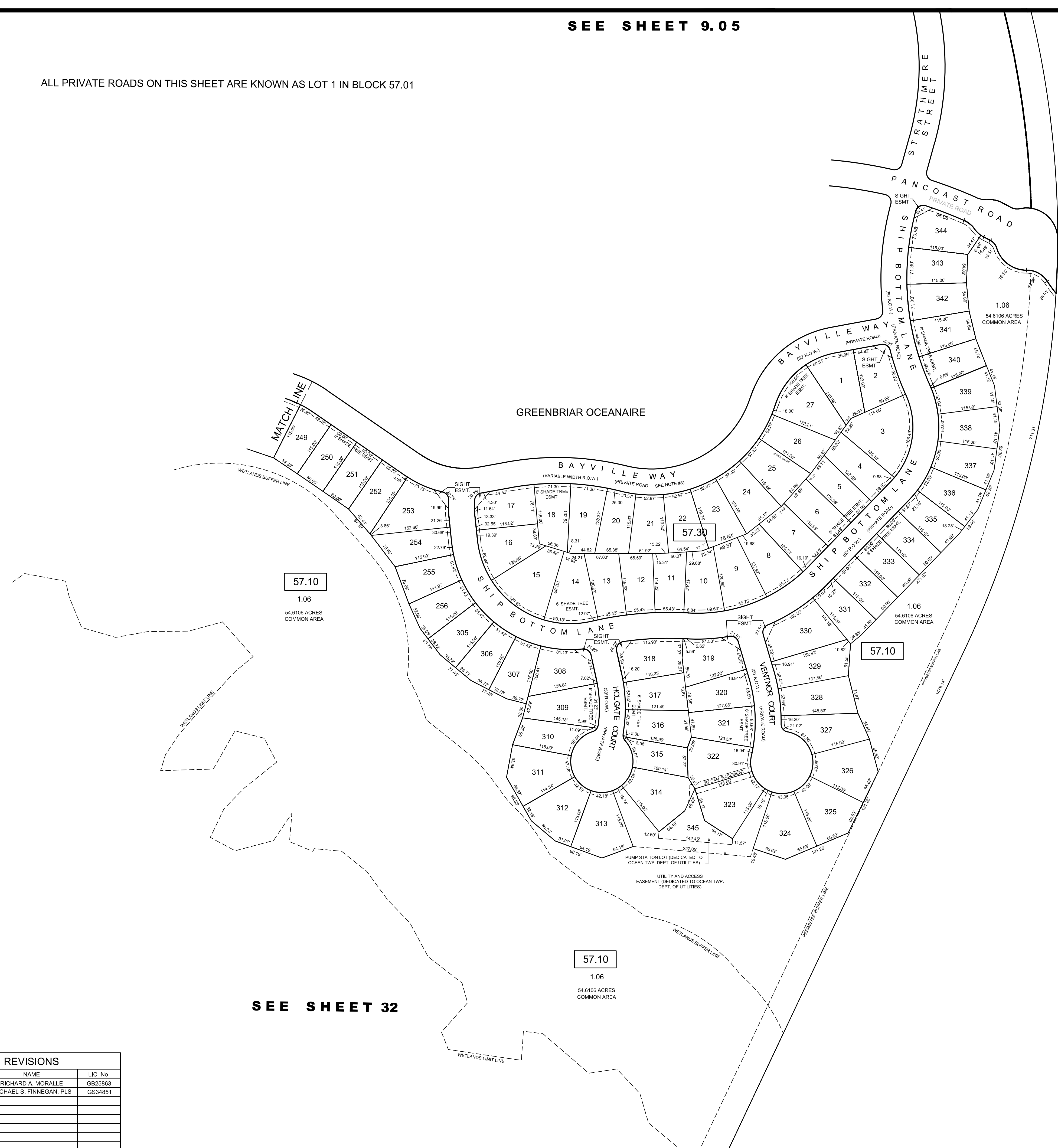
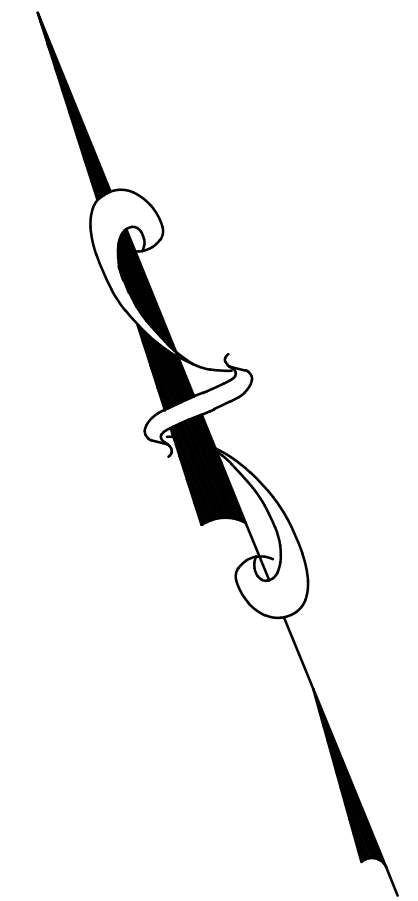


SEE SHEET 9.05

ALL PRIVATE ROADS ON THIS SHEET ARE KNOWN AS LOT 1 IN BLOCK 57.01

THIS SHEET IS AN AUTOCAD COMPUTER GENERATED DRAWING.
THIS WAS DONE UNDER THE SUPERVISION OF RICHARD A. MORALLE, P.E. & P.L.S.
LICENSED LAND SURVEYOR N.J. LICENSE NO. GB25863 DATED DEC. 31, 2012
THE APPROVED ORIGINAL IS ON FILE IN THE ENGINEER'S OFFICE.



SEE SHEET 9

SEE SHEET 32

THIS MAP HAS BEEN REDRAWN USING COMPUTER AIDED DRAFTING/DESIGN (CAD/D) AND COORDINATE GEOMETRY (COGO).

TAX MAP
OCEAN TOWNSHIP
OCEAN COUNTY, NEW JERSEY
SCALE: 1" = 100' DECEMBER 31, 2012
RICHARD A. MORALLE, P.E., P.L.S. 25863
T&M ASSOCIATES
11 TINDALL ROAD
MIDDLETOWN, NEW JERSEY 08723

REVISIONS		
DATE	NAME	LIC. No.
12-31-12	RICHARD A. MORALLE	GB25863
12/31/18	MICHAEL S. FINNEGAN, PLS	GS34851